



Solutions



www.acrel-electric.ke aaron@acrel.cn

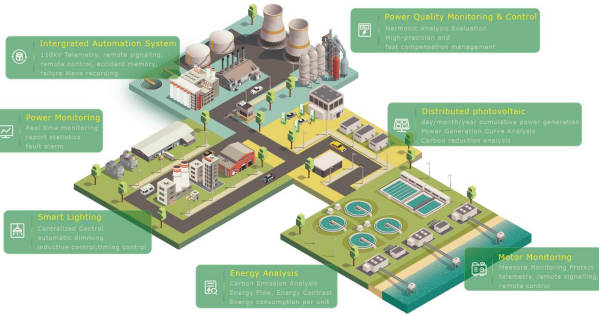


System Solution

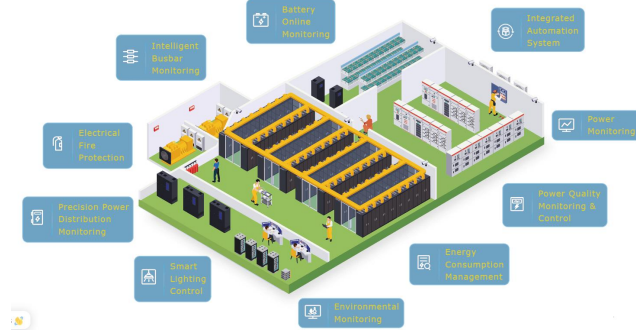
 Operation and Maintenance Cloud Platform for Substations	 Prepayment Cloud Platform	 Energy Management System	 Energy Efficiency Management System	 Smart Lighting Control System
 Medical Isolation Power Supply System	 Charging Pile Energy Management System Solution	 Energy Consumption Monitoring Solution for Base Station	 Smart Busway Monitoring Solution	 Wireless Temperature Monitoring System
 Precision distribution monitoring Solution for IDC	 Smart Motor Control and Protection Solution	 Power Monitoring System	 Cloud Platform for Power IOT	 Photovoltaic System Solutions
 Split Core Current Transformer	 Hall Sensor Solution	 Prepaid Solution	 WHD Temperature & Humidity Controller Solution	 Residual Current Operated Relay



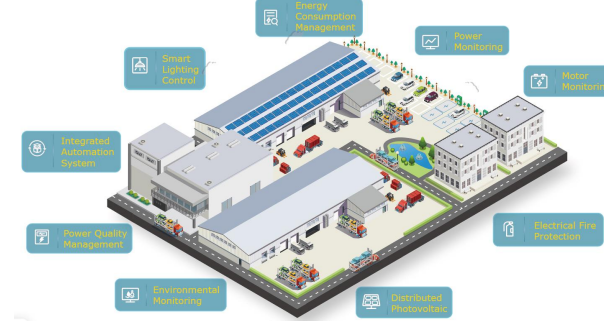
Industry Solution



Water Treatment Plant Solution



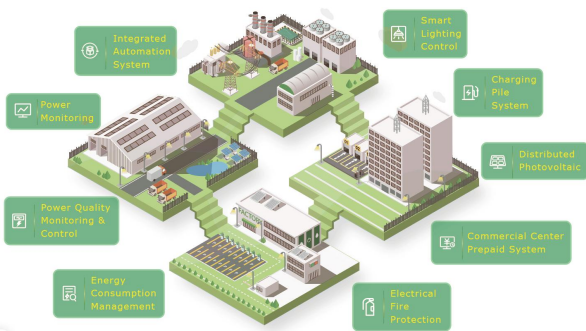
Data Center Solution



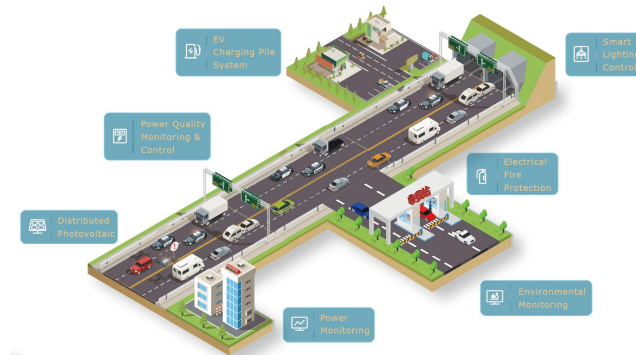
Factory Solution



Commerce Solution



Park Solution



Highway Solution



Airport Solution



Campus Solution



Industry Solution



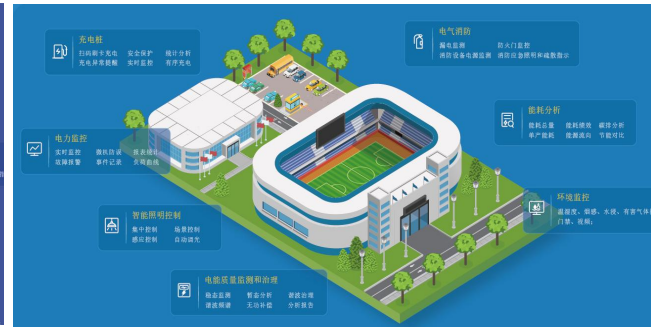
Hospital Solution



Electronic Factory Industry



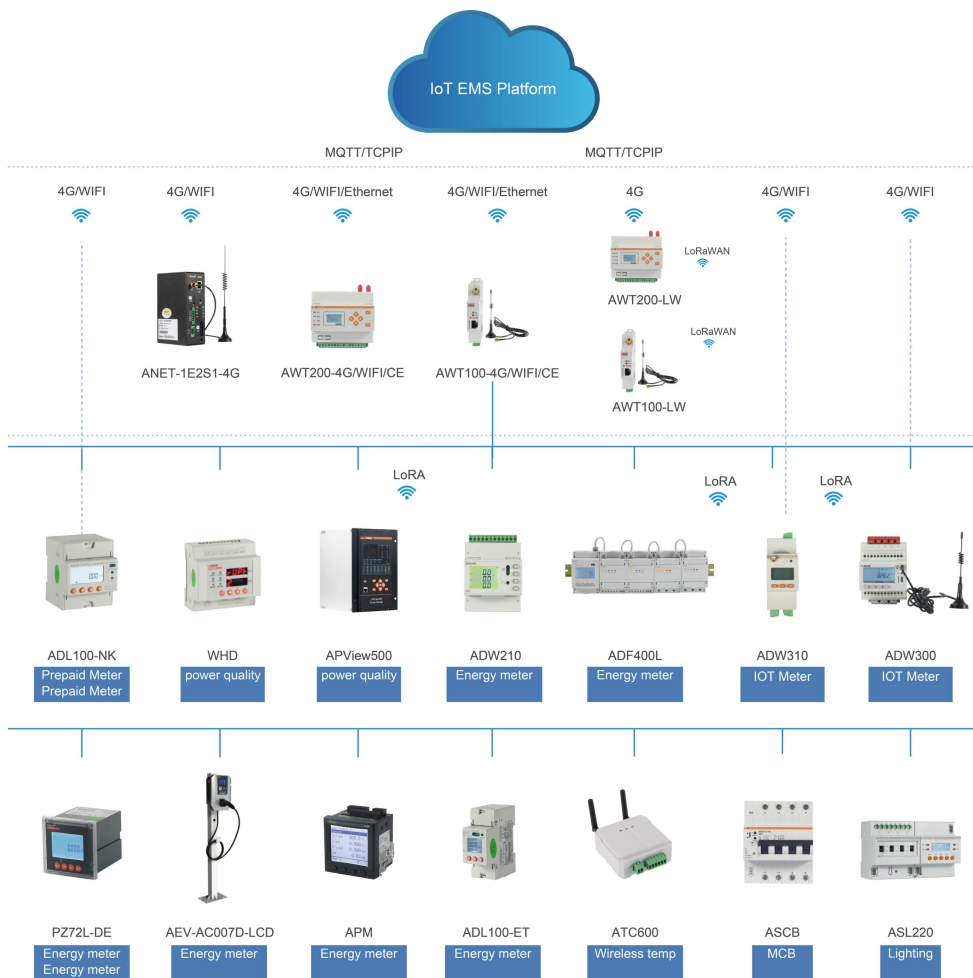
Biopharmaceutical Industry



Recreational and Sports Building



Acrel-EIoT能源物联网云平台
Acrel-EIoT Cloud Platform



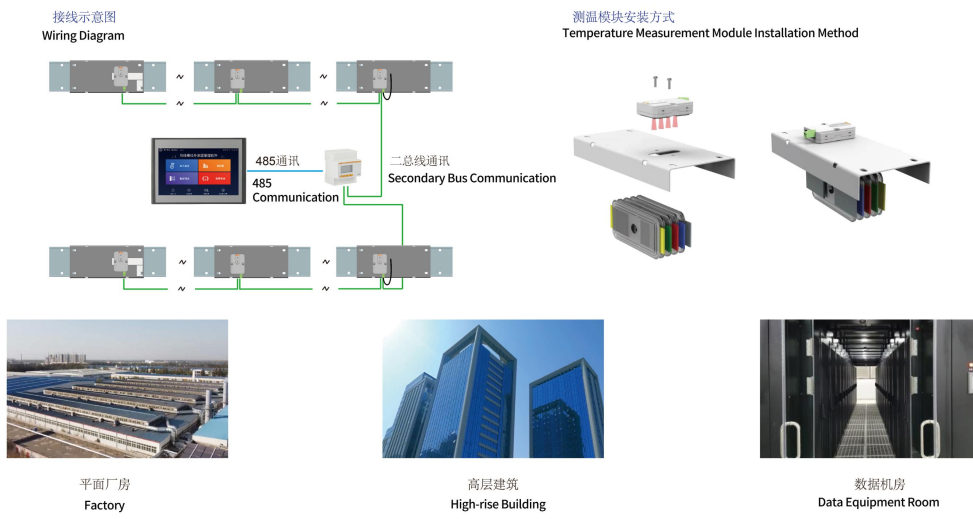
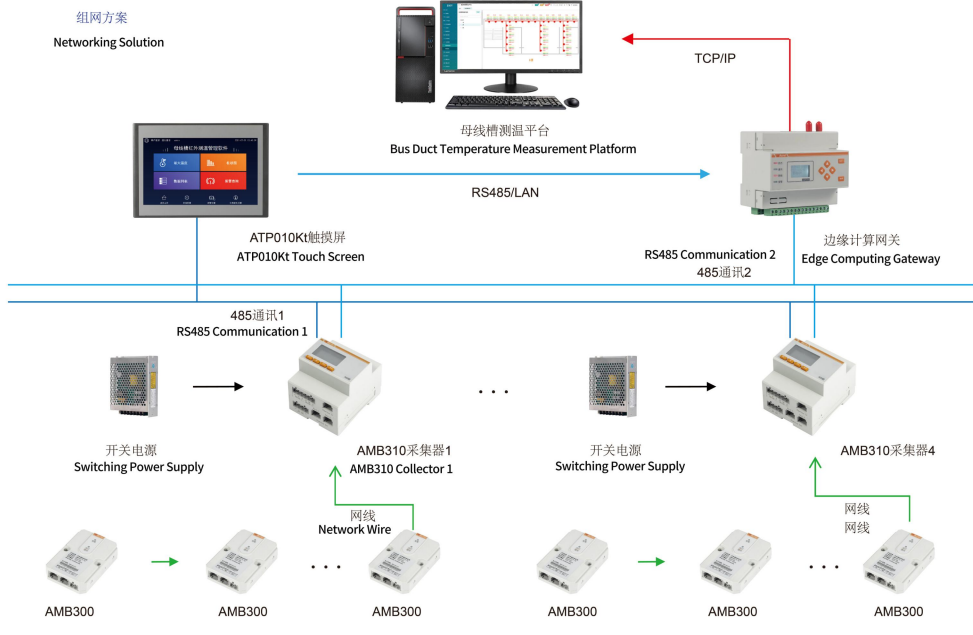
Acrel-EIOT

Acrel-EIoT platform based on the data center of the Internet of Things, implements unified upstream and downstream data standards, and provides a platform with energy Internet of Things data services for Internet users. Users only need to buy the Acrel IoT Power Instrument and sensor, select a gateway, and install the scanning code can use their mobile phones and computers to get the required industry data services.

Protocol	MQTT, TCP/IP
Gateway	AWT100, AWT200 etc.
Power Instrument	ADW300, ADW210, APM800, ARTM, ACR10R, DJSF1352-RN etc.
Application	Business, Schools, Factories, Commercial Buildings, Hospitals, Smart City, etc.

母线槽测温系统

Bus Duct Temperature Measurement System

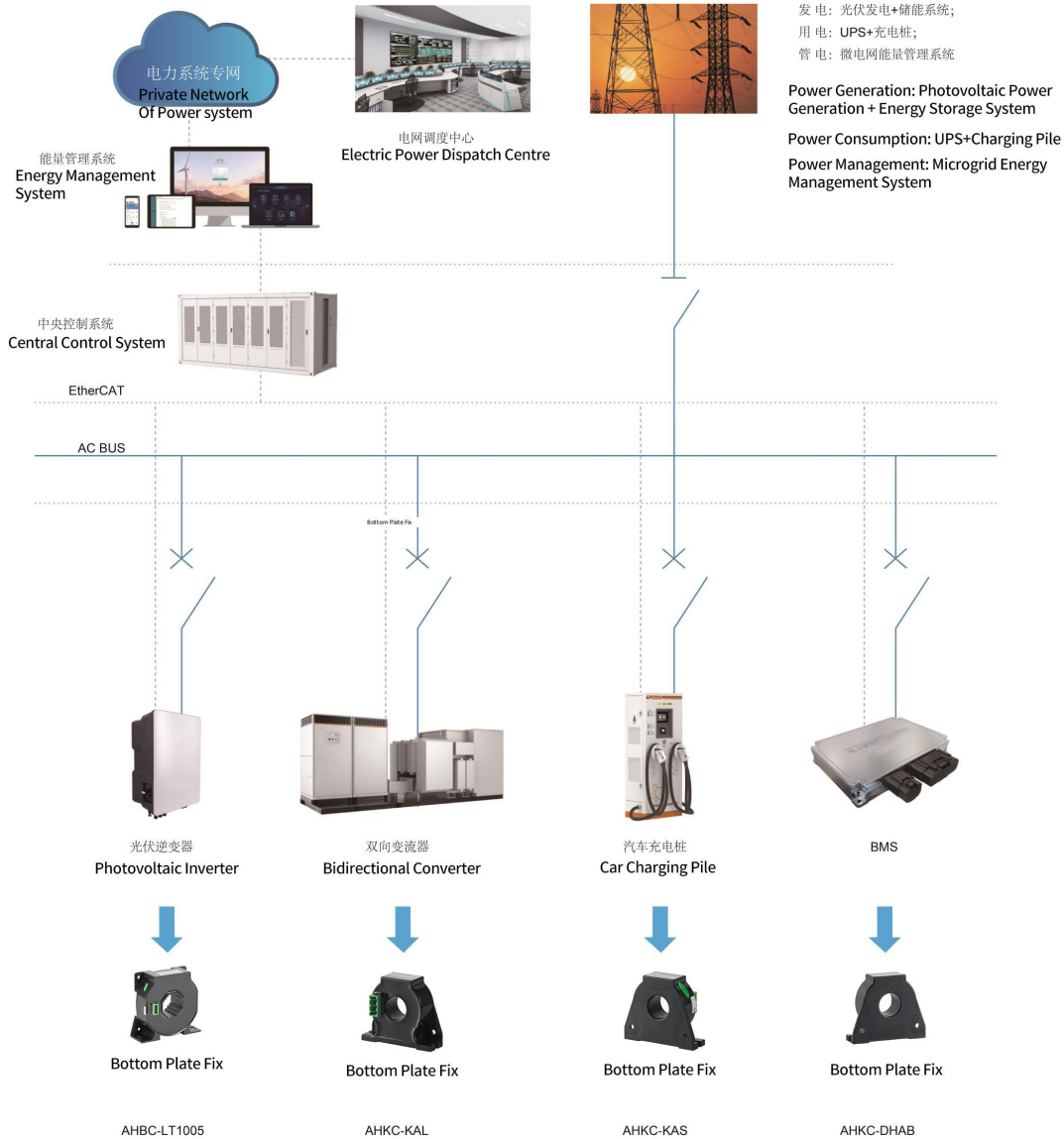


Bus Duct Temperature Measurement

The bus duct temperature measurement system can solve the problem of safe temperature measurement and accurate temperature measurement of the busway. The device is mainly used in the online temperature monitoring system of densely insulated busbar connectors in various fields.

Protocol	Modbus-RTU, Modbus-TCP
Gateway	AWT100, AWT200, ANet, etc.
Power Instrument	AMB300 infrared temperature measurement module, AMB310 infrared temperature measurement collector.
Application	Factory, High-rise Building, Data Room, etc.

霍尔在储能系统中的应用
Application Of Hall Sensor In Energy Storage System

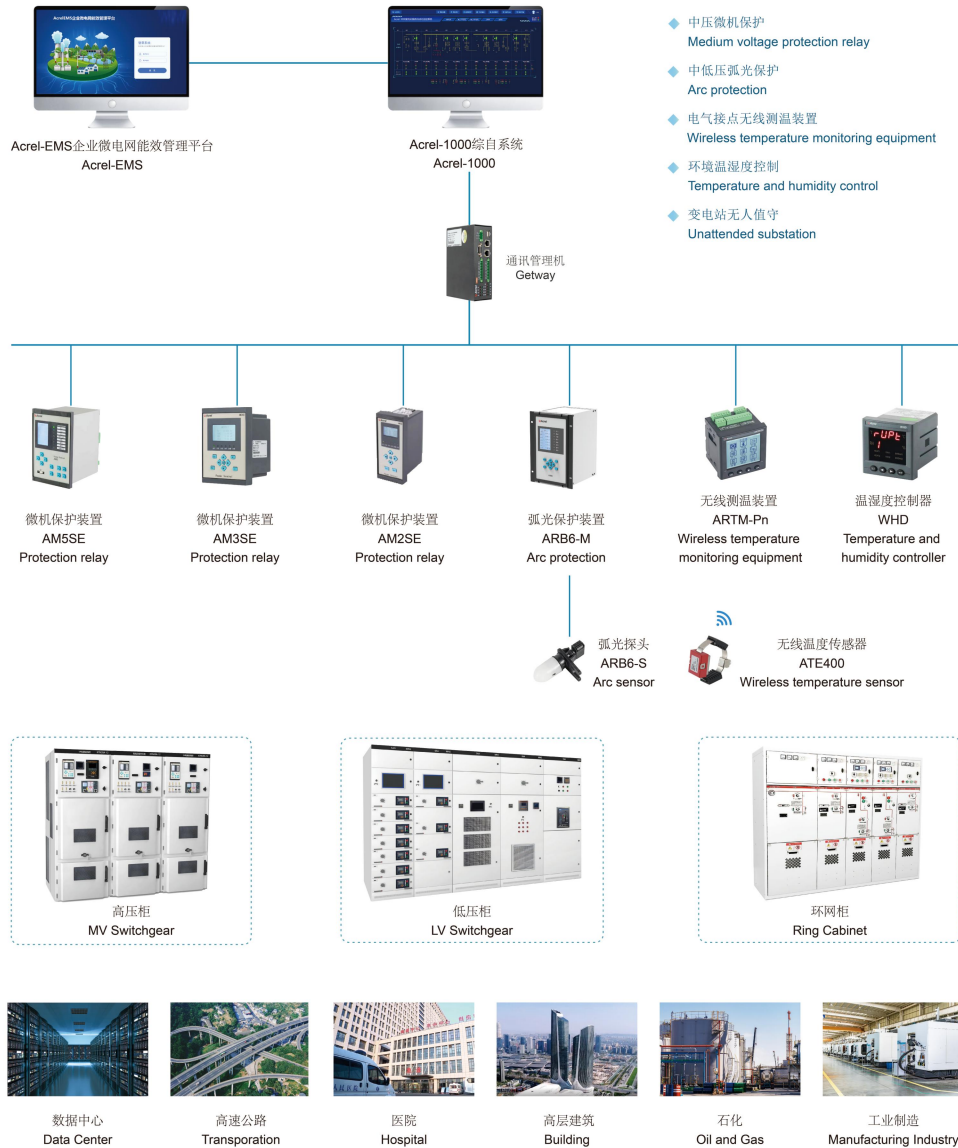


Hall Sensor In Energy Storage

The Hall current sensor is mainly suitable for the isolation and conversion of complex signals such as AC, DC, and pulse. It is suitable for current signal acquisition and feedback control of current monitoring and battery applications, inverter power supply and solar power management systems, DC panels and DC motor drives, electroplating, welding applications, inverters, UPS servo control and other systems.

Protocol	Modbus-RTU
Hardware	AHKC series hall sensor
Application	Base station, Substation, Switch Room.

变电站综合自动化系统 Substation Monitoring and Control System



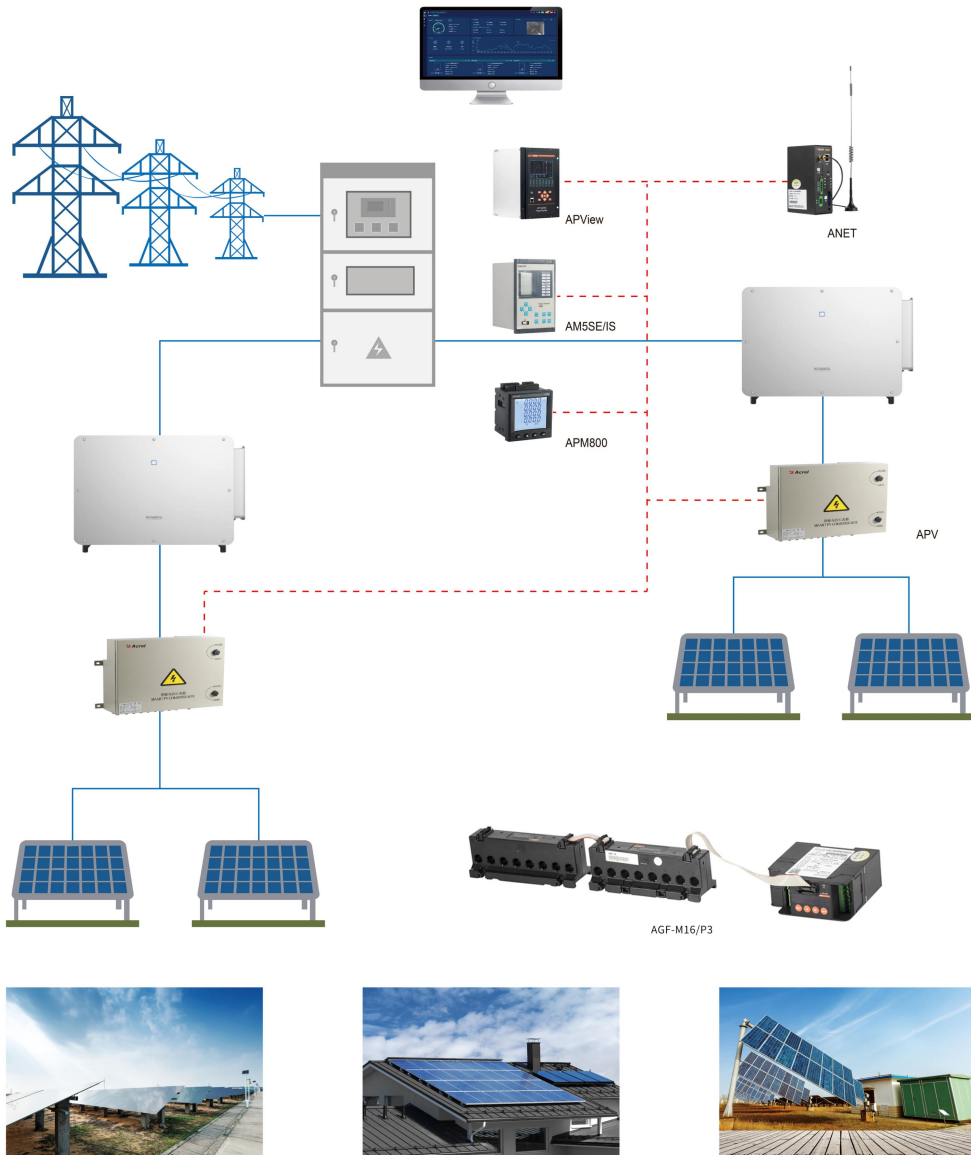
Substation Automation System

Acrel-2000 / Z substation automation system according to the requirements of power system automation and unattended, for the voltage level of 35kV and below.

Protocol	MQTT, TCP/IP
Gateway	ANET, AWT200
Power Instrument	ADW300, APM8xx, ARTM, AM, ARTU, DJSF1352-RN, etc.
Application	Office Construction, Commercial Construction, Communication Construction, Transportation, Factories and Mining Enterprises, New Energy Construction, etc.

分布式光伏运维监控系统

Distributed Photovoltaic Operation and Maintenance Monitoring System

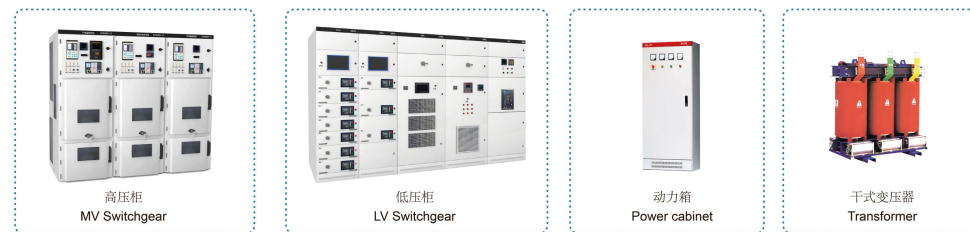
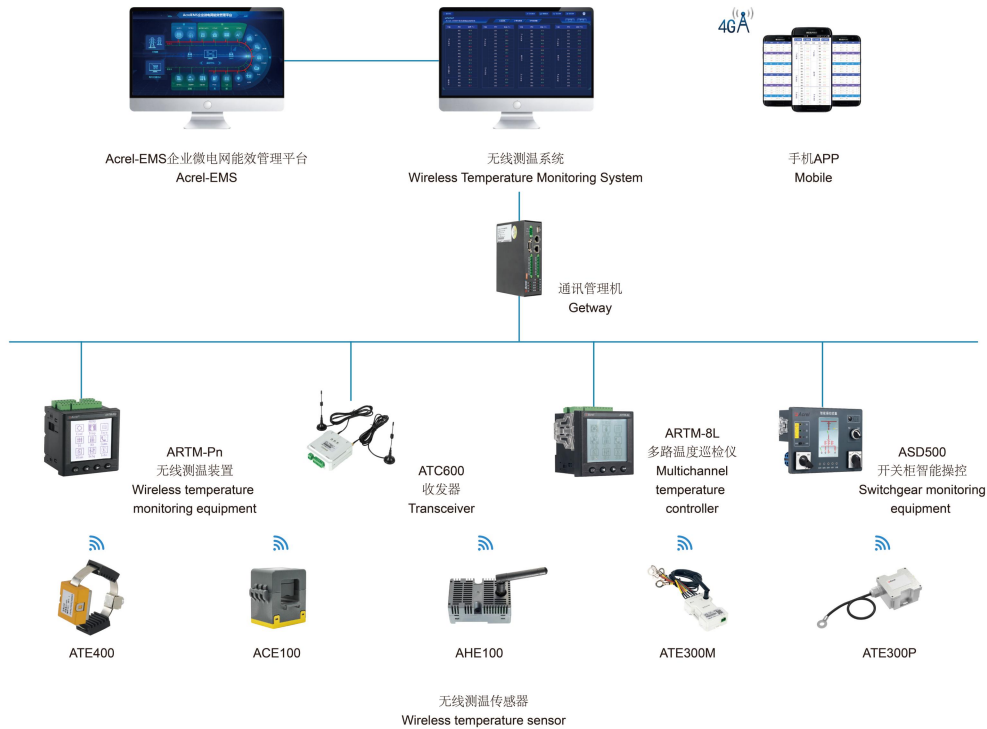


Distributed Photovoltaic Operation and Maintenance Monitoring

AcrelCloud-1200 distributed photovoltaic operation and maintenance cloud platform helps users manage scattered photovoltaic sites by monitoring inverter equipment, meteorological equipment and camera equipment of photovoltaic sites.

Protocol	Modbus-RTU
Gateway	ANET
Power Instrument	AGF-M, AM5SE-IS, DJSF1352-RN, PZ96L, AMC, APM.
Application	Distributed Photovoltaic and Centralized Photovoltaic.

电气设备无线测温系统解决方案 Wireless Temperature Monitoring Solution

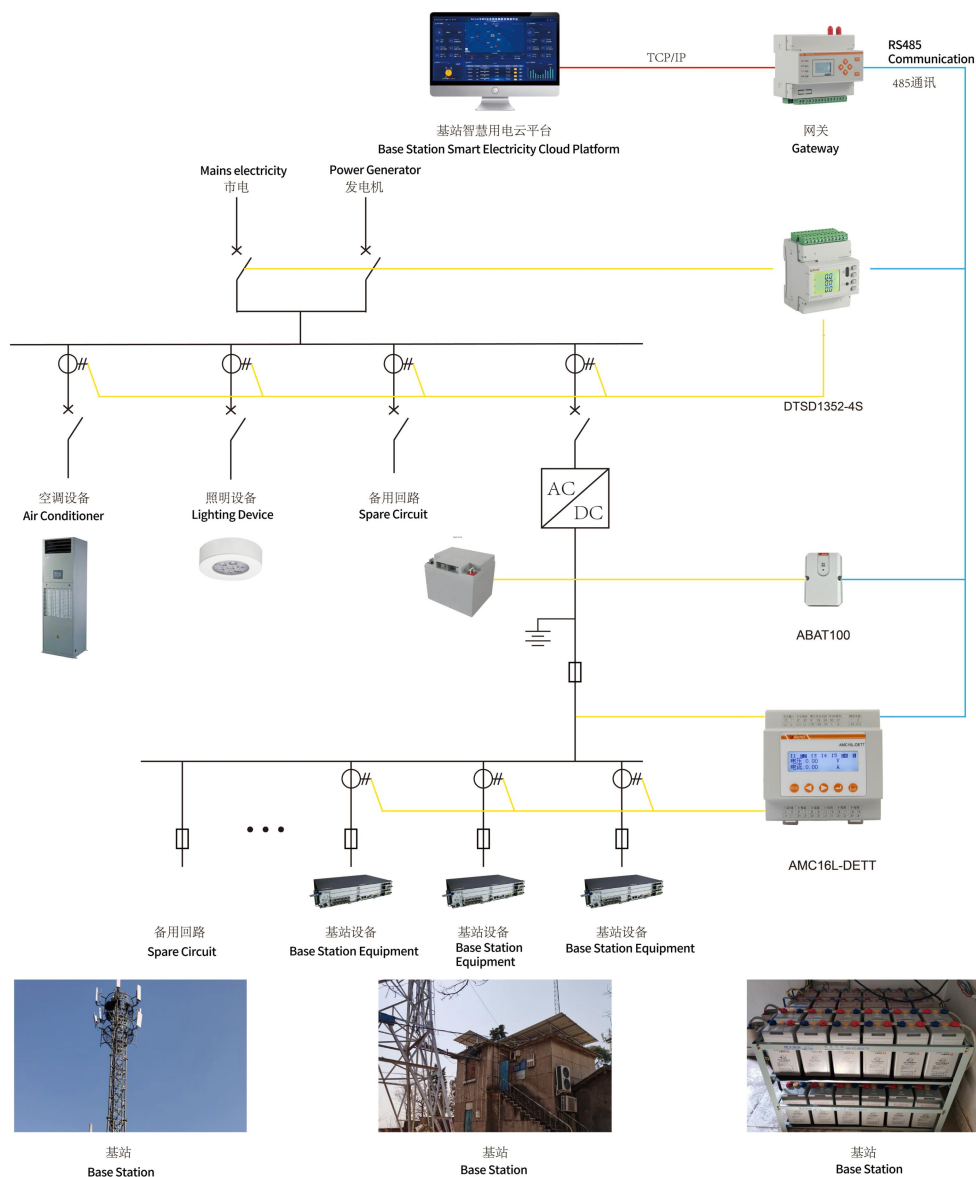


Wireless Temperature Monitoring

Acrel wireless temperature monitoring solution for electrical equipment is used in high and low voltage power systems to accurately and continuously monitor the temperature of each electrical contact to ensure safe, stable and reliable operation of the power system.

Protocol	Modbus-RTU
Temperature sensor	ATE400, ATE300M, ATE300P, ACE100.
Power Instrument	ARTM-Pn, ATC600, ARTM-8L, ASD500.
Application	Steel industry, Chemical Industry, Mining Industry, Rail Transit, Buildings, Industrial Manufacturing.

基站智慧用电管理系统 Base Station Smart Power Management System



Smart Power Management System for Base Stations

The smart power consumption management system of the base station installs AC and DC intelligent monitoring equipment, wireless acquisition equipment, and system management platforms on 5G macro stations and indoor sub-sites to complete power-off operations during nighttime non-business hours, reduce power consumption, reduce operating costs, and improve the real-time monitoring and protection function of the power supply line status of communication equipment.

Protocol	MQTT, TCP/IP
Gateway	AWT100, AWT200
Power Instrument	ADW300, ADW210, AMC96L-E4/KC, DTSD1352-4S, AMC16(L)-DETT, AHKC, etc.
Application	Base Station

预付费云平台
Prepaid Cloud Platform



MQTT/TCP/IP

MQTT/TCP/IP

4G/Ethernet



ANET-2E4SM

4G/WIFI/Ethernet



AWT200-4G/WIFI/CE

4G/WIFI/Ethernet



AWT100-4G/WIFI/CE

4G/WIFI

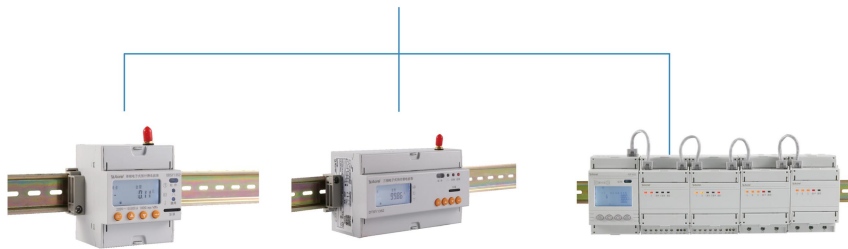


ADL100-EY/WF

4G/WIFI



ADL300-EY/WF



ADL100-EY/Z

ADL300-EY/Z

ADF400L



Commercial Plaza



Group property



University dormitory



Public buildings



grand hotel



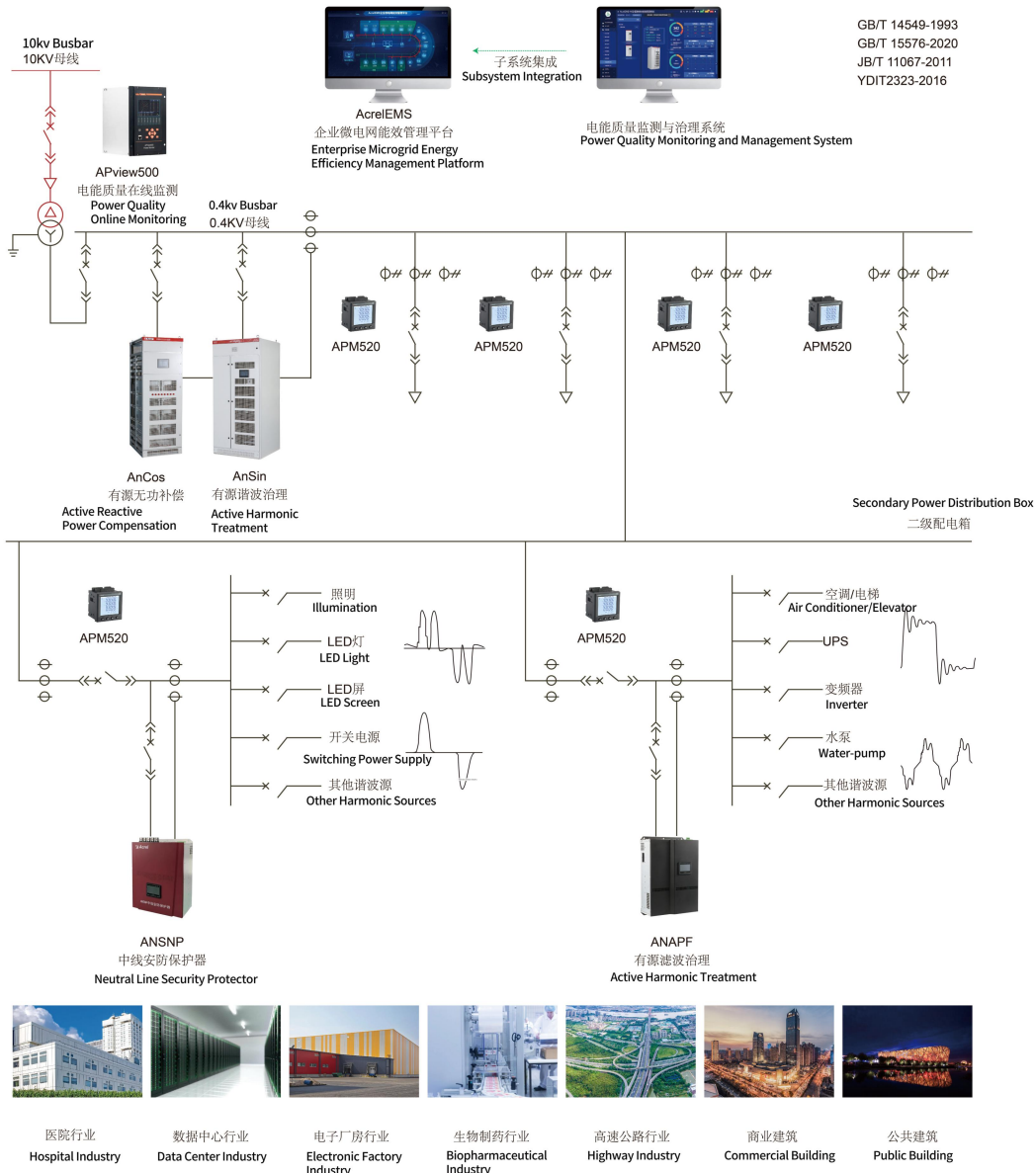
Rental apartment

Prepaid Cloud Platform

The prepaid cloud platform is a power sales management system developed by Acrel Company and matched with electronic prepaid energy meters. It is one of the functions of IoT EMS platform. It mainly completes the parameter setting of electric energy meter, merchant electricity sale management and energy consumption management. It is easy to operate and realizes remote real-time operation and real-time monitoring of property companies.

Protocol	MQTT, TCP/IP
Gateway	AWT100 , AWT200
Power Instrument	DDSY, DTSY, ADF400L, etc.
Application	Commercial Complexes, Property Groups, Industrial Parks, Industries, Offices, Universities, etc.

安科瑞电能质量监测治理系统
Acrel Power Quality Monitoring and Management System

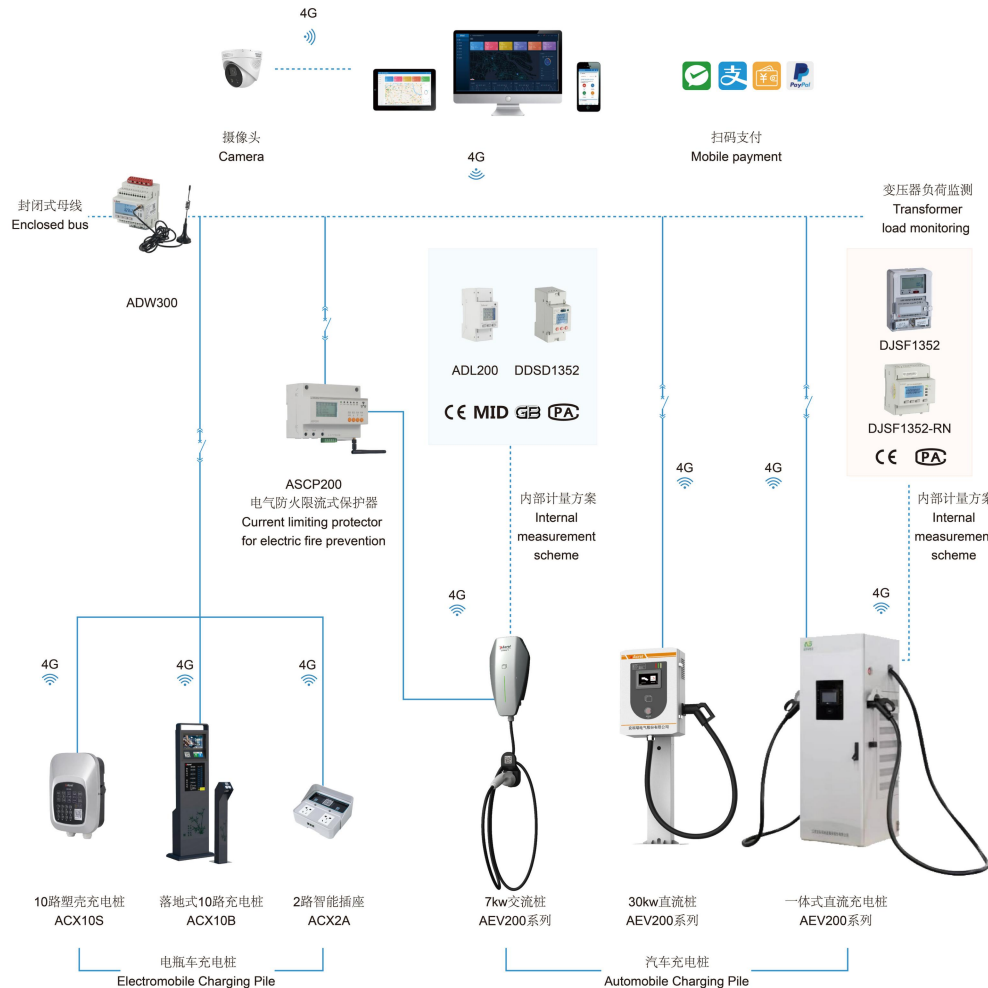


Acrel Power Quality Inspection and Management

Mainly to study the elimination of reactive power compensation and harmonic governance in the power supply and distribution system, suitable for the new construction, reconstruction, expansion and technical renovation projects of industrial and civil and public building electrical equipment in the reactive power compensation, harmonic suppression and comprehensive treatment.

Protocol	MQTT, TCP/IP
Gateway	ANET, AWT etc.
Harmonic monitoring equipment	APM520/APM810/APview500
Harmonic control equipment	ANSin/ANSVG
Reactive power compensation equipment	ANCos/SVC
Central line security protector	ANSNP
Application	Hospital, Data Center, Electronic Factory, Highway, Commercial Building, etc.

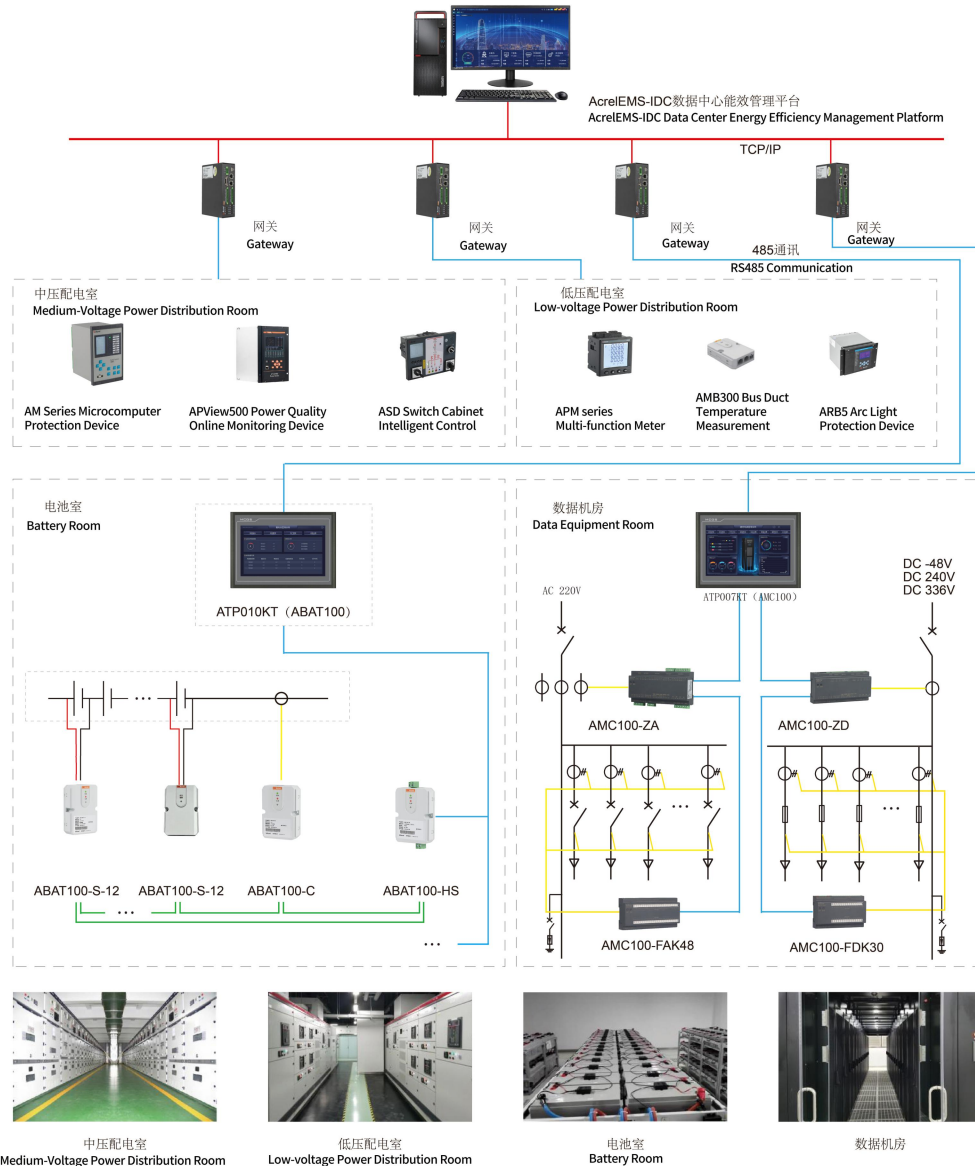
充电桩管理系统 Charging Pile Management System



Charging Pile Management

It provides two charging methods of slow charging and fast charging, wall-mounted and landing charging piles, and provides charging software solutions for electric vehicles. It can enjoy convenient, efficient and safe charging services anytime and anywhere. The charging methods are diversified, and convenient and efficient and safe charging services are provided for car owners and users.

Protocol	MQTT, TCP/IP
Electromobile charging pile	ACX10S/ACX10B/ACX2A
EV charging pile	7kw/30kw/60kw/120kw AEV200 series
AC Power Instrument	ADL200/ADL400/ADW300
DC Power Instrument	DJSF1352-RN/PZ72L-DE
Current limiting protector	ASCP200
Application	Community, Hotel, Commercial Plaza, Campus, Hospital, Industrial Park.

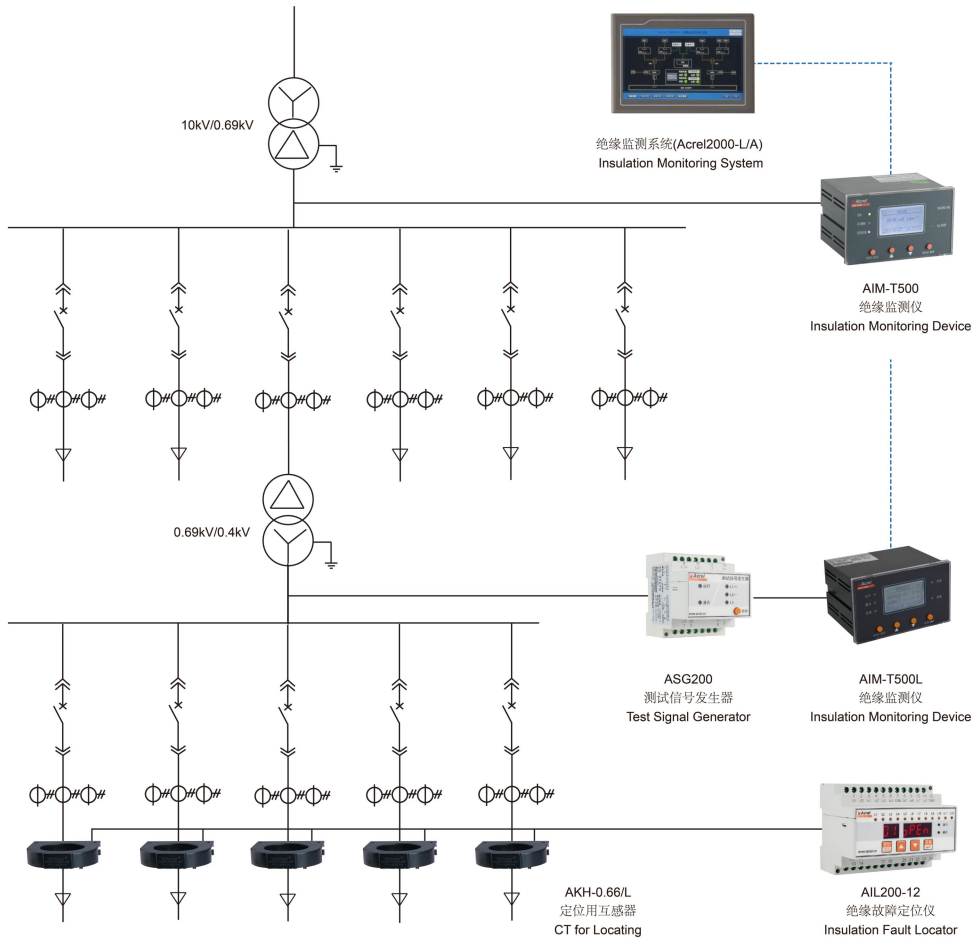


AcreIEMS-IDC Data Center Energy Efficiency Management

AcreIEMS-IDC data center energy efficiency management system builds real-time monitoring based on high, medium and low voltage distribution systems, diesel generators, UPS and power monitoring, PUE analysis and dynamic loop monitoring based on terminal distribution system data acquisition to help data center managers understand data center energy operation, and focus on fire and electrical safety. Timely warning of anomalies to ensure stable and reliable operation of data centers.

Protocol	TCP/IP
Gateway	ANET
Power Instrument	AMC16Z, AMC100, AKH-0.66, ABAT100, ATP, ASD, APView, AMB100, AMB110, AMB300, etc.
Application	Applicable to data centers of Operators, Banks, New Media, and Internet Enterprises.

IT配电绝缘监测及故障定位系统
Insulation Monitoring and Fault Location System



船舶和港口
Ships and Ports



采矿
Mining



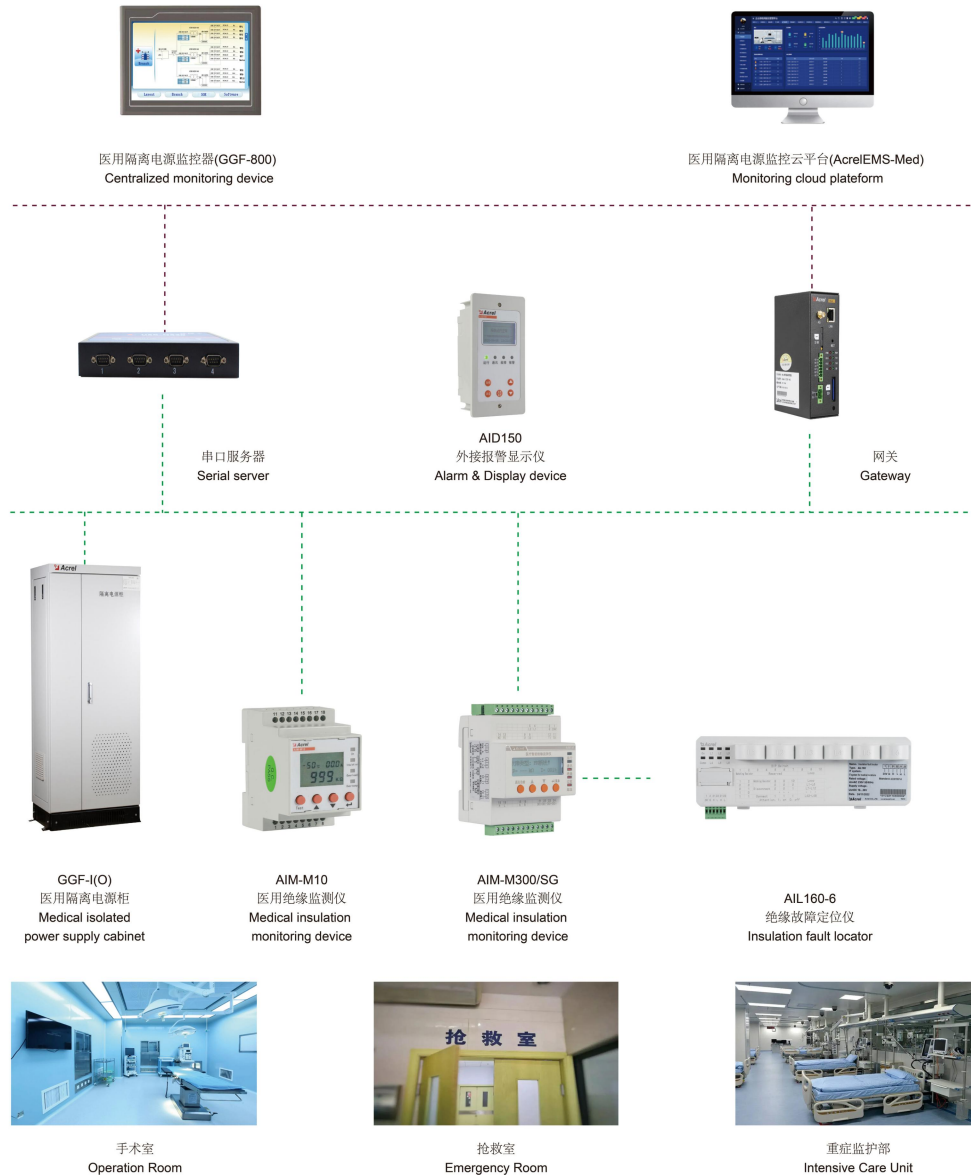
可再生能源
Renewable energy

Insulation Monitoring and Fault Location

The system has multifunctions, including insulation resistance monitoring, insulation fault warning, insulation fault alarm, event recording, parameter setting, communication networking, etc. When the fault occurs, it can timely alarm and accurately locate the fault loop to remind relevant personnel to check the fault in time.

Protocol	Modbus-RTU
Power Instrument	AIM-T500L, ASG200, AIL200-12, AKH-0.66L.
Application	Mine, Glass factory, Electric Furnace and Test Equipment, Ships, Metallurgical Plant, Chemical Plant etc.

医用隔离电源系统 Medical Isolated Power System

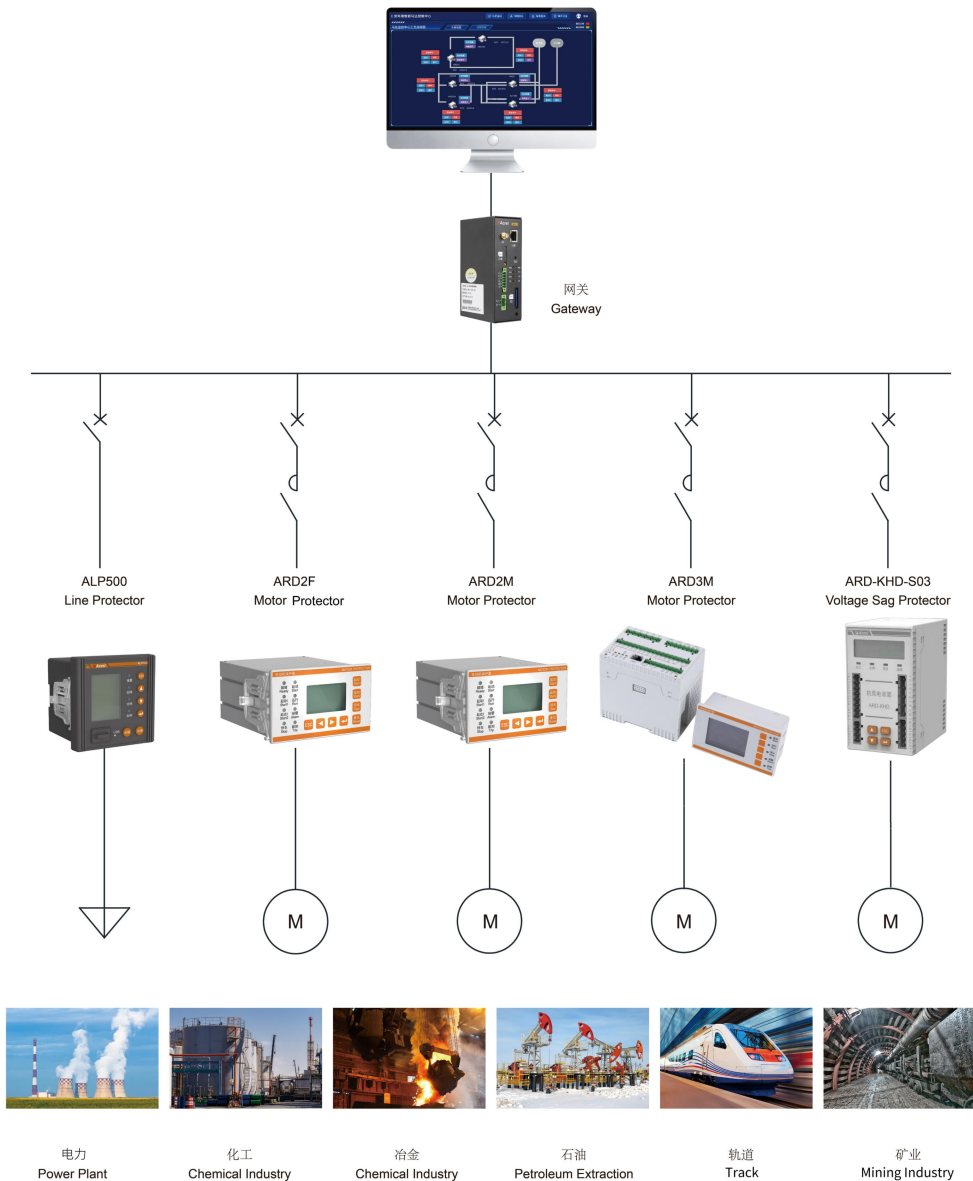


Medical Isolated Power System

Medical isolation power supply cabinet and insulation monitoring device are designed according to the different distribution characteristics of the Class II medical places to monitor the operation of medical IT system. Once an IT system fails, the electrical maintenance personnel can make a judgment within the time, and deal with it according to the field situation.

Protocol	Modbus-RTU
Power Instrument	GGF-O8G
Application	Hospital Operating Room, ICU (CCU) care unit and other important places.

电机运维测控
Motor Monitoring and Controlling



Motor Monitoring and Controlling

The motor operation and maintenance measurement and control platform focuses on the industrial production site and monitors various electrical parameters data of low-voltage motor loop and feeder loop in real time, helps users complete parameter monitoring, energy consumption analysis and operation supervision of motor equipment, realizes visual management of important production equipment, and provides data basis for the construction of smart factory.

Protocol	TCP/IP
Gateway	ANET
Power Instrument	ALP, ARD2, ARD2F, ARD3, ARD3T, ARD3M ARD2M, ARD-KHD-S03 series, etc.
Application	Power plant, Chemical Industry, Metallurgy Industry, Petroleum Industry, Railway, Mining Industry.



Customers







Project



www.acrel-electric.ke aaron@acrel.cn



A composite image showing a green landscape with solar panels in the foreground, wind turbines in the middle ground, and a white Li-ion energy storage unit in the background. The unit has a blue lightning bolt logo and the text "Li-ion ENERGY STORAGE". A vertical green bar is positioned to the left of the word "SOLAR".

SOLAR





Energy Management Project Of Germany Green Safe House

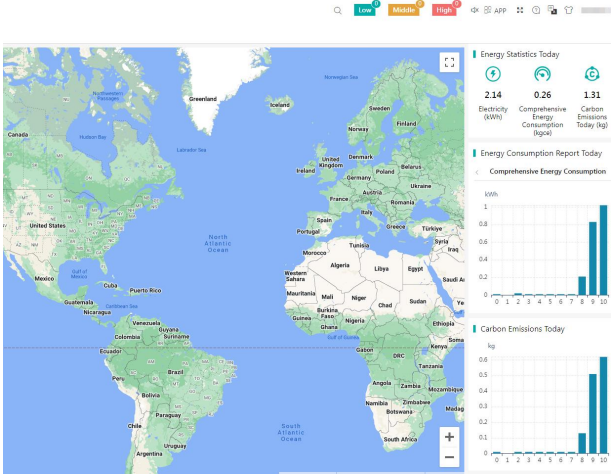
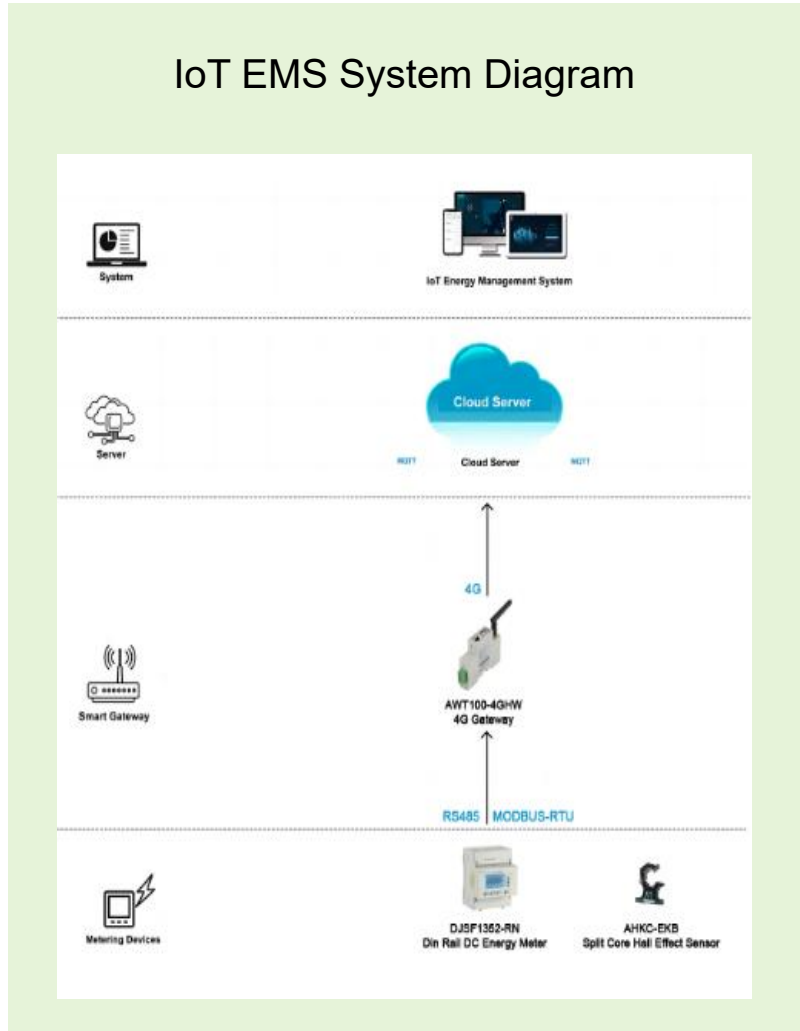


Project Overview: Client buy Acrel IoT EMS cloud system, hardware use DJSF1352-RN DC energy meter, AHKC-EKB Hall current sensor, AWT100-4GHW wireless gateway.

Project Amount: About \$100,000

Client : S.A.H. GmbH, EPC
T.C.S. Tactical Combat Systems SA, End user

Client Website: <https://sah-hamburg.de/>
Related projects: Other electric power monitoring to other green house





Acrel Cloud-1200 PV System of CLP Innovation Enterprises Limited in Hong Kong



Client Website:

<http://www.clpgroup.com>

Related project: energy consumption

Project Overview: Client bought Acrel Cloud-1200 PV System , hardware use Anet-1E1S1-4G and Anet-1E2S1-4G smart gateway.

Project Amount: About \$158440

Client : CLP Innovation Enterprises Limited , End user



Acrel Cloud-1200 PV System Diagram



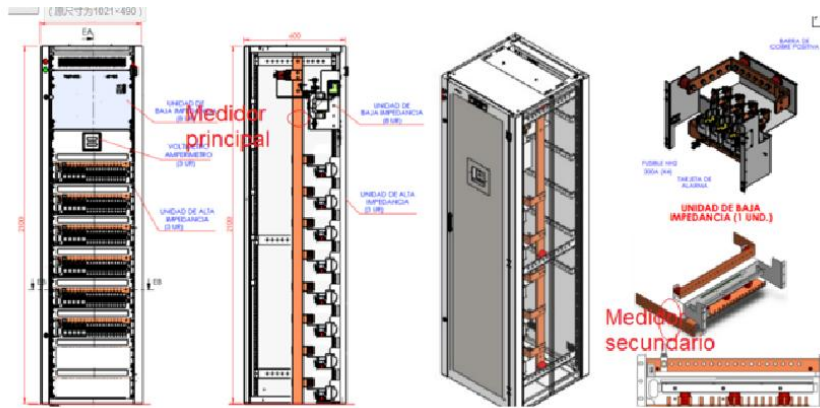


DATA CENTRE





Data Center Energy Monitoring Project in Peru



Project Name: Data Center Energy Monitoring Project in Peru Project

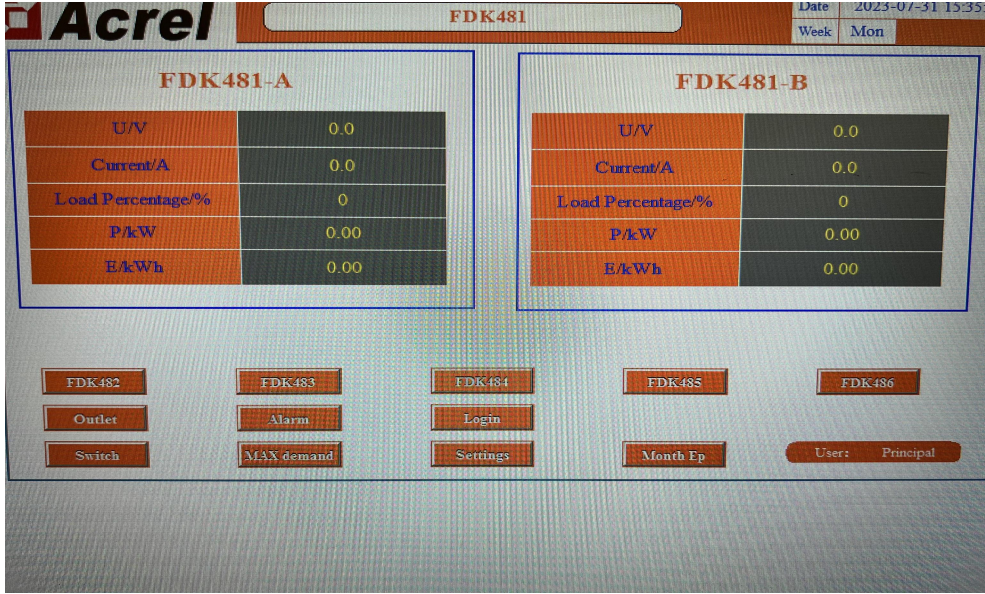
Overview: The customer purchased DC power distribution monitoring products for the data center, which were monitored locally using touch screens and connected to Huawei software via Ethernet.

Project Amount: Paid 146,070.28USD, still have about 300pcs of distribution cabinets

Client: Swichgear factory, sell and install distribution cabinet for customers

Website: emalexa.com

Related projects: INDUSTRIA EMALEXA S.A.C

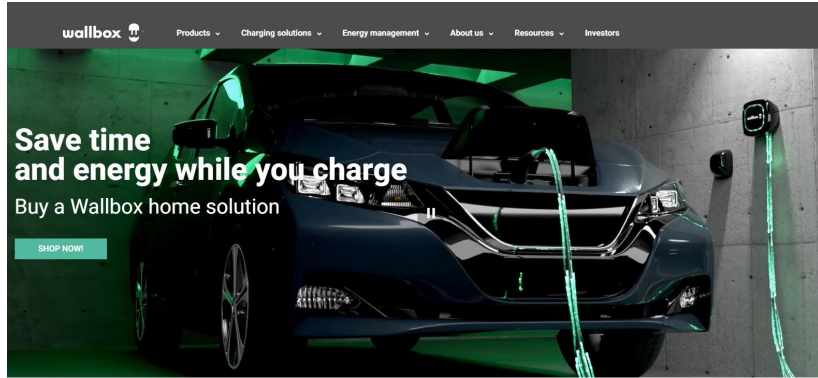




EV CHARGING



Acrel AC/DC Energy Meter in EV Charger Project-Spain



Project Overview:

Software : The myWallbox platform

Hardware: DJSF1352-RN/D DC Energy Meter
 ADL200 Single Phase Energy Meter
 ADL400 Three Phase Energy Meter

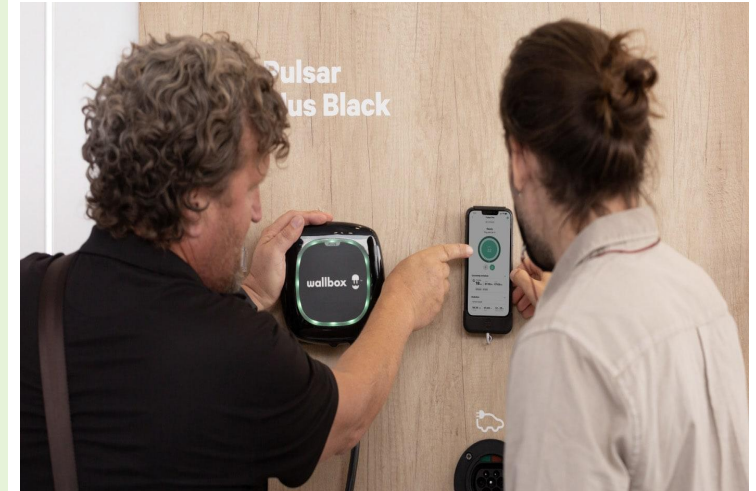
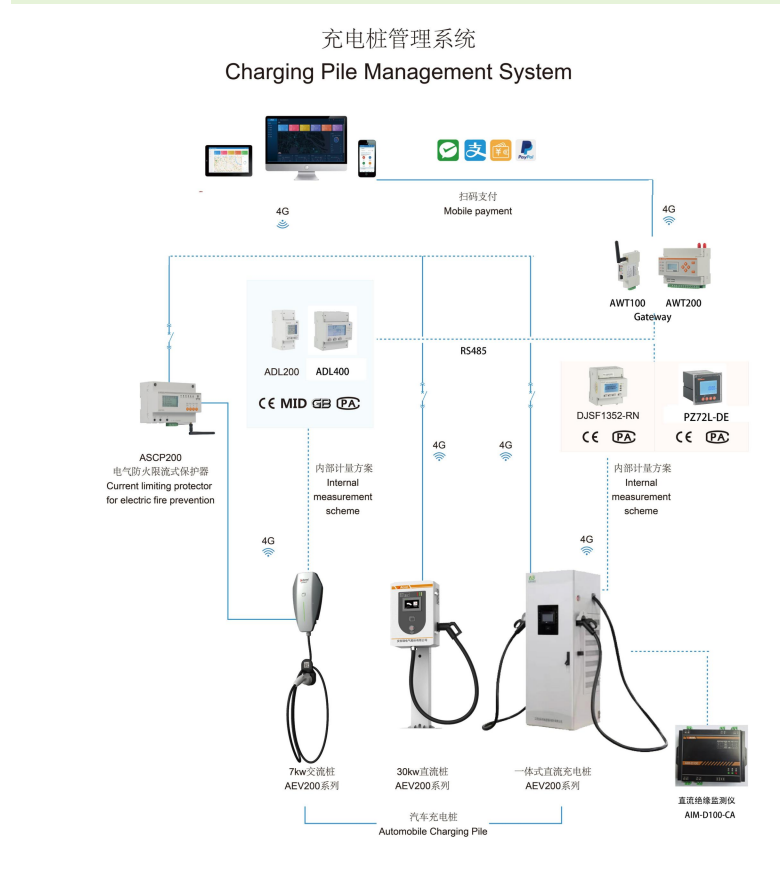
Project Amount: About \$250,000

Client : Wallbox Chargers

Client Website: <https://wallbox.com/>

Related projects: HYPERNOVA DC EV Charger in USA

IoT EMS System Diagram





TELECOM BASE STATION



Acrel AC/DC Energy Meter in Base Station Project-Romania



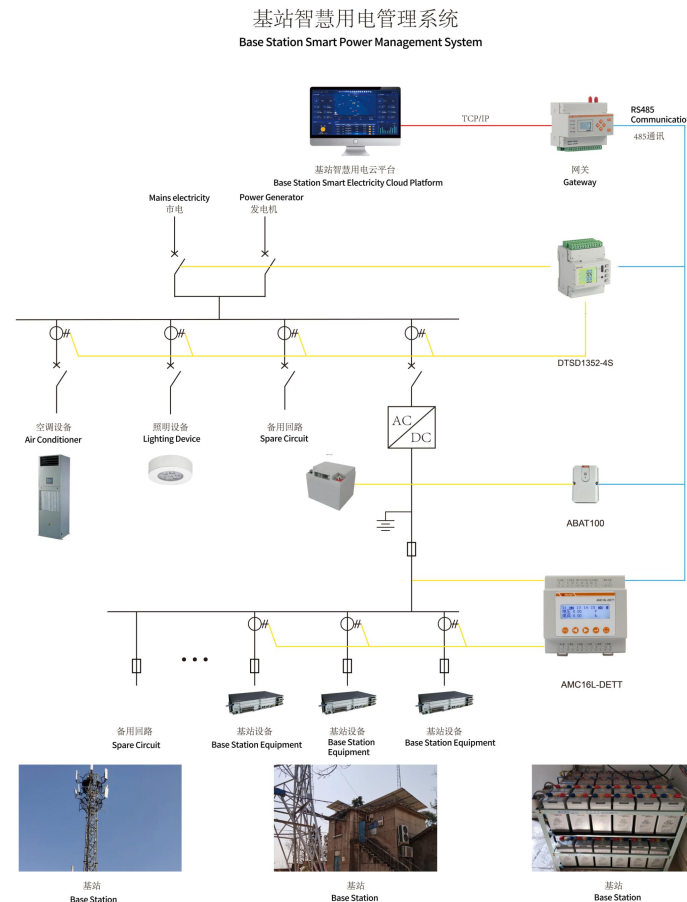
Project Overview:
 Software : The Camusat platform
 Hardware: AMC16-DETT/AI DC Energy Meter
 ADW300W-C Three Phase Energy Meter
 AHKC-EKA Hall Effect sensor

Project Amount: About \$350,000

Client : Camusat

Client Website: <https://camusat.com/fr/home-francais/>
 Related projects: 5G base station in Africa

Base Station Power Management System Diagram

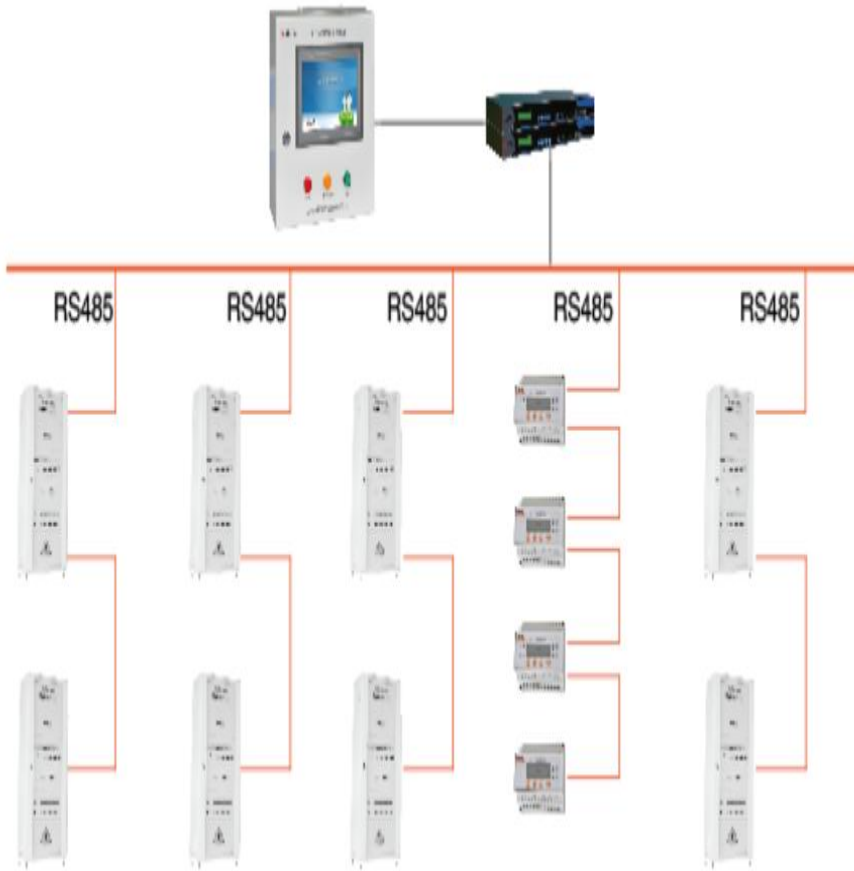


An illustration of a hospital scene. In the foreground, a doctor in a white coat and stethoscope stands with a nurse in blue scrubs. In the background, another nurse is at a desk, and a person in blue scrubs is pushing a cart. The scene includes a whiteboard, medical charts, and a shelf with supplies. A vertical green bar is positioned to the left of the word 'HOSPITAL'.

HOSPITAL



Medical Isolation Power Supply System Application in Brazil



Medical Isolation Power Supply System

 www.acrel-electric.ke aaron@acrel.cn



Project Overview: Isolation Power Supply System ,
hardware use AIM-M10, AIM-M100, AIM-M150, AIL150-8, AID150, AID200, AIM-R100, AKH-0.66P26
Project Amount: About \$720000

Client : CSE Soluções Elétricas Ltda , EPC,
Design, purchase and installation



Client Website:

www.csesolucoeseltricas.com.br

Related projects: industrial Insulation Monitoring Device, wireless temperature monitoring



DISTRIBUTION CABINET



Acrel Wireless Temperature measurement Project-Italy



AIS for MV Distribution



GIS for MV Distribution

Project Overview:

Software : The SEL platform

Hardware: ARTM-Pn Temperature Data Collector
ATE series Temperature Sensor

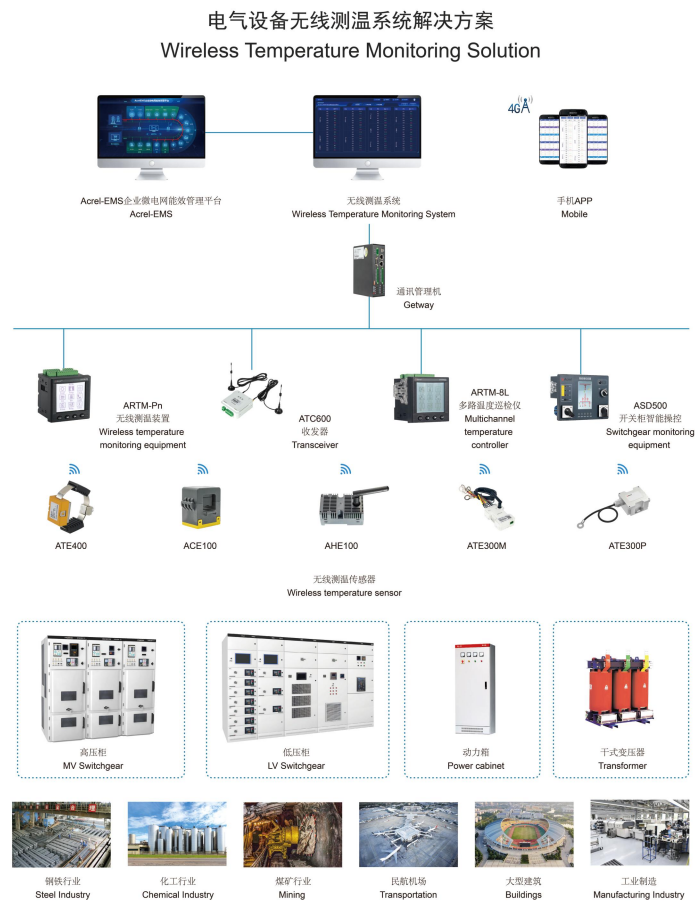
Project Amount: About \$400,000

Client : SEL S.P.A

Client Website: <http://www.sel-electric.com/>

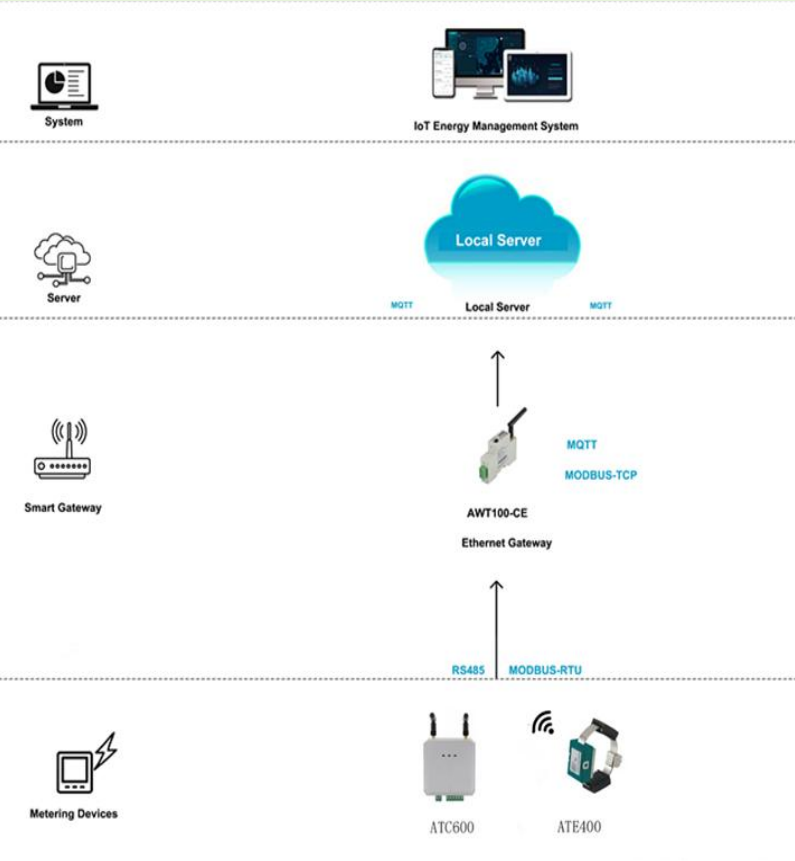
Related projects: Enel Green Power in Italy

Wireless Temperature Monitoring Diagram





Wireless Temperature Monitoring Project of Lotte Mart in Hanoi Vietnam

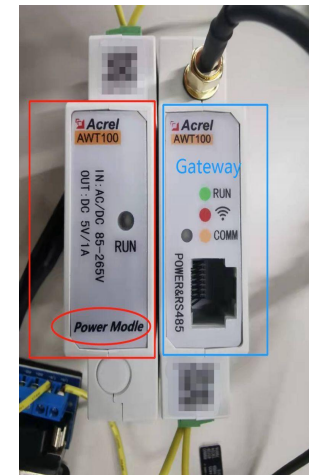


IoT EMS System Diagram

Project Overview: Client buy Acrel IoT EMS cloud system, hardware use ATE400 wireless temperature sensors , ATC600-C receiver, AWT100-CE ethernet gateway.

Project Amount: About \$100,000

Client : V.T.E.C.H Electrical Technology Co., Ltd , EPC
Lotte Mart in Hanoi Vietnam, End user



Client Website: <https://www.vtech-electric.vn/>
Related projects: Other electric power monitoring to other Lotte Mart

A night-time photograph of an industrial facility, likely a refinery or chemical plant, with numerous towers, pipes, and storage tanks illuminated by artificial lights. The scene is set against a dark sky. A vertical green bar is positioned to the left of the word 'INDUSTRIAL'.

INDUSTRIAL



Energy Management Project of Casa de Moneda, Chile

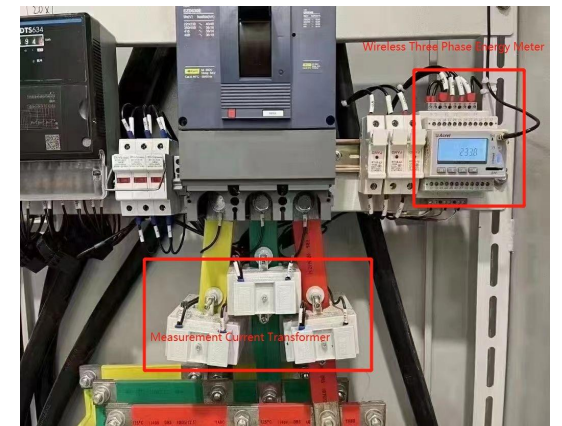
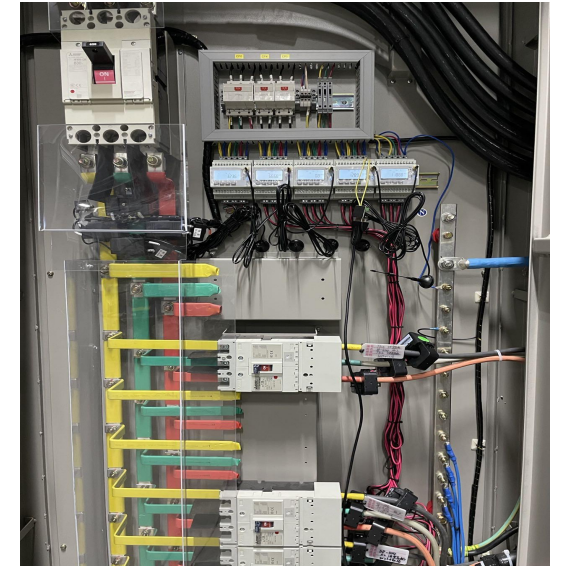
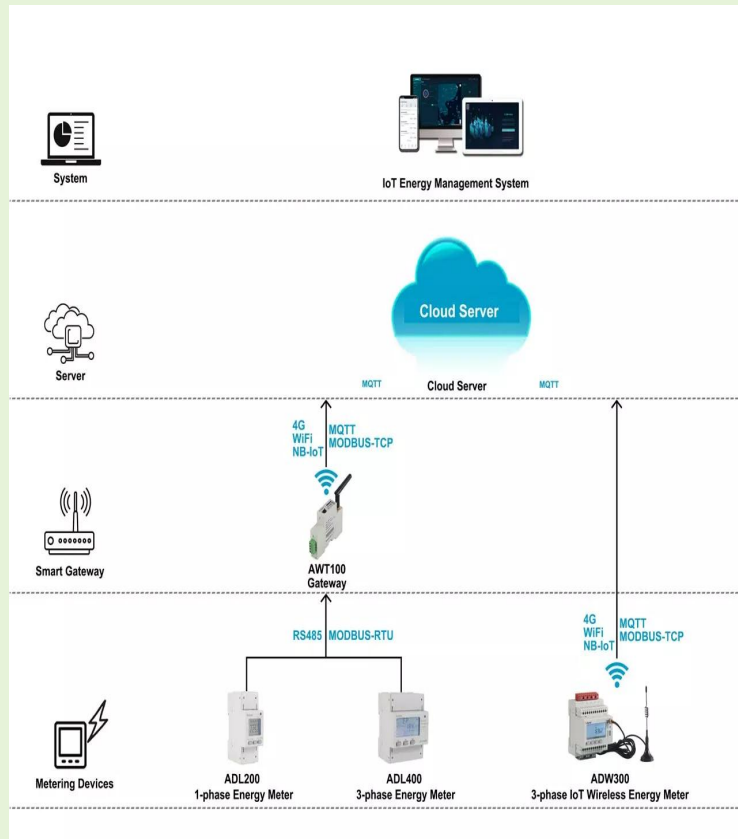


Project Overview: Client buy Acrel IoT EMS cloud system, hardware use ADW300-WF three phase wifi energy meter, AKH-0.66/K split core current transformer
Project Amount: About \$50000

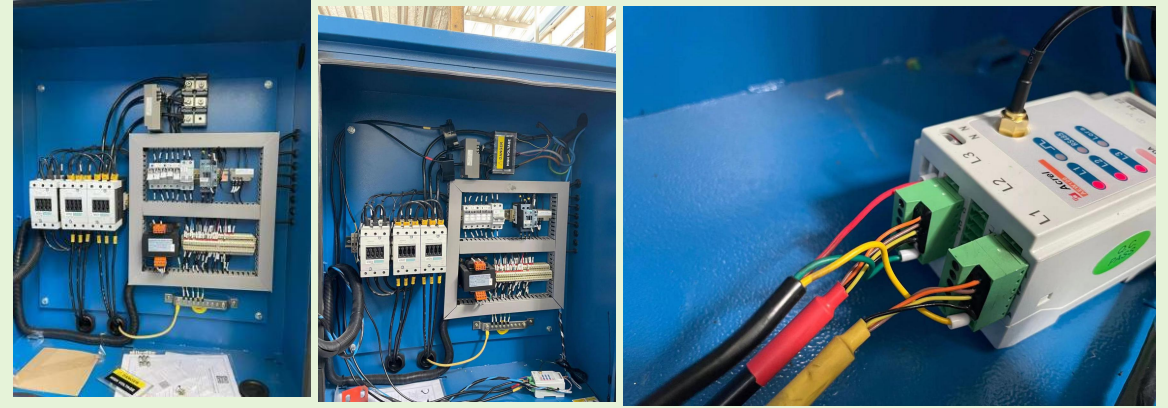
Client : Casa de Moneda, End user

Client Website: <https://www.casamoneda.cl/>
Related projects: Other electric power monitoring to other factories

IoT EMS System Diagram



Acrel Compressor Energy Consumption Monitoring Project in Spain



Project Overview: Client buy Acrel AEW100 LORA 868MHz wireless consumption monitoring meter, to connect with their own gateway and software monitoring system. Then the custom demand was put forward to add 5V output terminals to supply power to the external microcontroller.

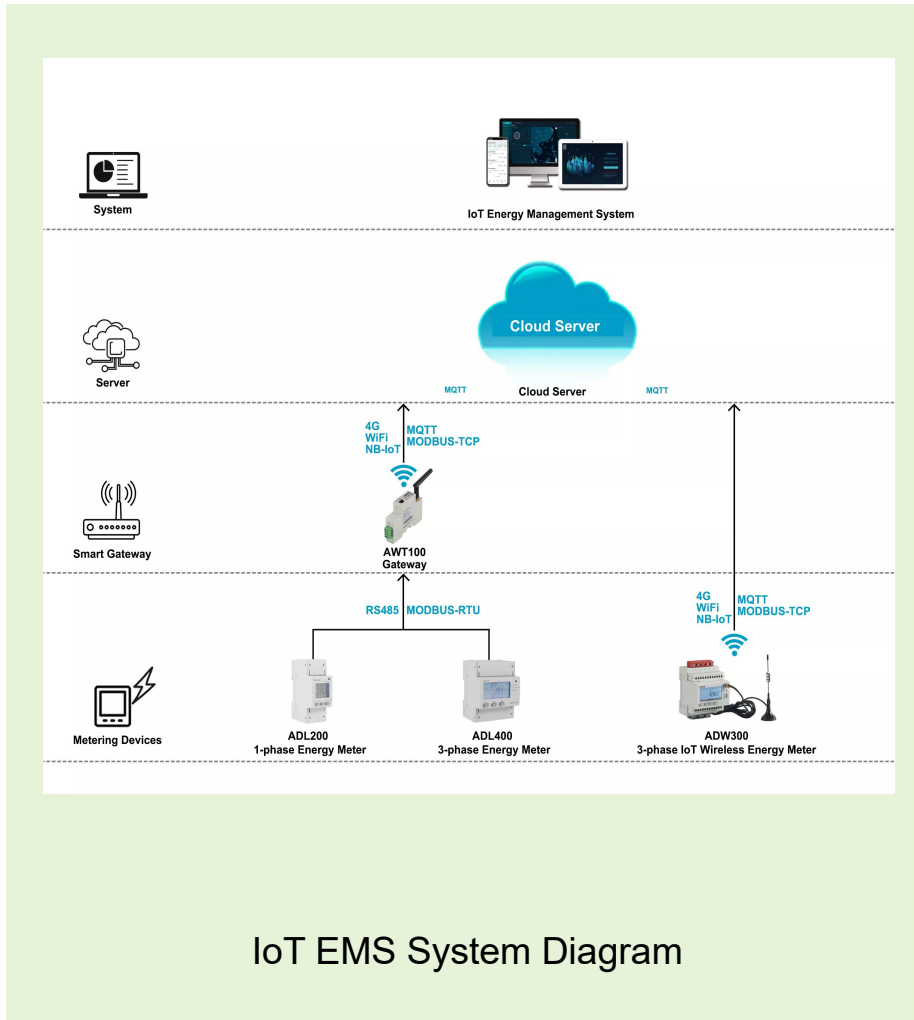
Project Amount: About \$110,000

Client : PNEUMETRIX S.L.U.

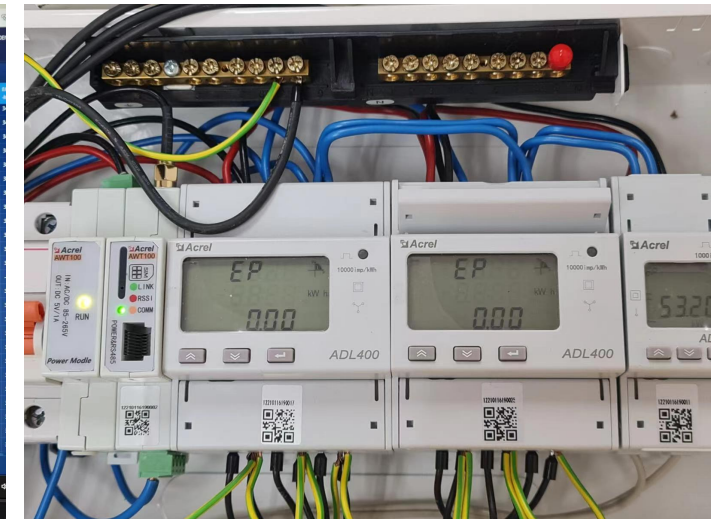
Client Website: <https://pneumetrix.com/en/>

Related projects: Energy Management System in Commercial Plaza





Time	Power	Energy	Power	Energy	Power	Energy	Power	Energy	Power	Energy
08:00	116	1165	1165	206	2057	2054	140	1422	1344	140
08:05	1177	1184	1184	2052	205	204	138	1376	1162	1024
08:10	1162	1162	1162	2049	2049	2049	136	1356	1146	1016
08:15	1159	1159	1159	2046	2046	2046	135	1350	1134	984
08:20	1152	1152	1152	2043	2043	2043	134	1344	1116	948
08:25	1143	1143	1143	2040	2040	2040	132	1326	1098	912
08:30	1134	1134	1134	2037	2037	2037	130	1320	1080	876
08:35	1125	1125	1125	2034	2034	2034	128	1314	1062	840
08:40	1116	1116	1116	2031	2031	2031	126	1308	1044	804
08:45	1107	1107	1107	2028	2028	2028	124	1302	1026	768
08:50	1098	1098	1098	2025	2025	2025	122	1296	1008	732
08:55	1089	1089	1089	2022	2022	2022	120	1290	990	696
09:00	1080	1080	1080	2019	2019	2019	118	1284	972	660
09:05	1071	1071	1071	2016	2016	2016	116	1278	954	624
09:10	1062	1062	1062	2013	2013	2013	114	1272	936	588
09:15	1053	1053	1053	2010	2010	2010	112	1266	918	552
09:20	1044	1044	1044	2007	2007	2007	110	1260	900	516
09:25	1035	1035	1035	2004	2004	2004	108	1254	882	480
09:30	1026	1026	1026	2001	2001	2001	106	1248	864	444
09:35	1017	1017	1017	1998	1998	1998	104	1242	846	408
09:40	1008	1008	1008	1995	1995	1995	102	1236	828	372
09:45	999	999	999	1992	1992	1992	100	1230	810	336
09:50	990	990	990	1989	1989	1989	98	1224	792	300
09:55	981	981	981	1986	1986	1986	96	1218	774	264
10:00	972	972	972	1983	1983	1983	94	1212	756	228
10:05	963	963	963	1980	1980	1980	92	1206	738	192
10:10	954	954	954	1977	1977	1977	90	1200	720	156
10:15	945	945	945	1974	1974	1974	88	1194	702	120
10:20	936	936	936	1971	1971	1971	86	1188	684	84
10:25	927	927	927	1968	1968	1968	84	1182	666	48
10:30	918	918	918	1965	1965	1965	82	1176	648	12
10:35	909	909	909	1962	1962	1962	80	1170	630	-24
10:40	900	900	900	1959	1959	1959	78	1164	612	-60
10:45	891	891	891	1956	1956	1956	76	1158	594	-96
10:50	882	882	882	1953	1953	1953	74	1152	576	-132
10:55	873	873	873	1950	1950	1950	72	1146	558	-168
11:00	864	864	864	1947	1947	1947	70	1140	540	-204
11:05	855	855	855	1944	1944	1944	68	1134	522	-240
11:10	846	846	846	1941	1941	1941	66	1128	504	-276
11:15	837	837	837	1938	1938	1938	64	1122	486	-312
11:20	828	828	828	1935	1935	1935	62	1116	468	-348
11:25	819	819	819	1932	1932	1932	60	1110	450	-384
11:30	810	810	810	1929	1929	1929	58	1104	432	-420
11:35	801	801	801	1926	1926	1926	56	1098	414	-456
11:40	792	792	792	1923	1923	1923	54	1092	396	-492
11:45	783	783	783	1920	1920	1920	52	1086	378	-528
11:50	774	774	774	1917	1917	1917	50	1080	360	-564
11:55	765	765	765	1914	1914	1914	48	1074	342	-600
12:00	756	756	756	1911	1911	1911	46	1068	324	-636



Project Overview:
 Client buy Acrel IoT EMS cloud system, hardware use ADL400 energy meter, AKH-0.66/K split core current transformer, AWT100-CE ethernet gateway.

Project Amount: About \$100,000

Client : POWERBUILD CONST AND DEVT CORP





BUILDING



www.acrel-electric.ke aaron@acrel.cn



Deluxe Building Energy Management Project in UK



Project Overview: Client buys Acrel IoT EMS cloud system, hardware:DTSD1352-4S multi circuit energy meter, AKH-0.66/K split core current transformer,AWT100-CE ethernet gateway.

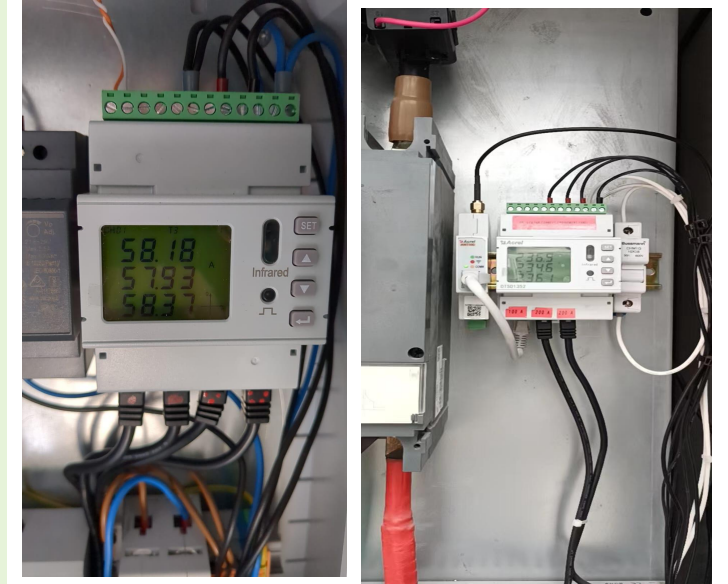
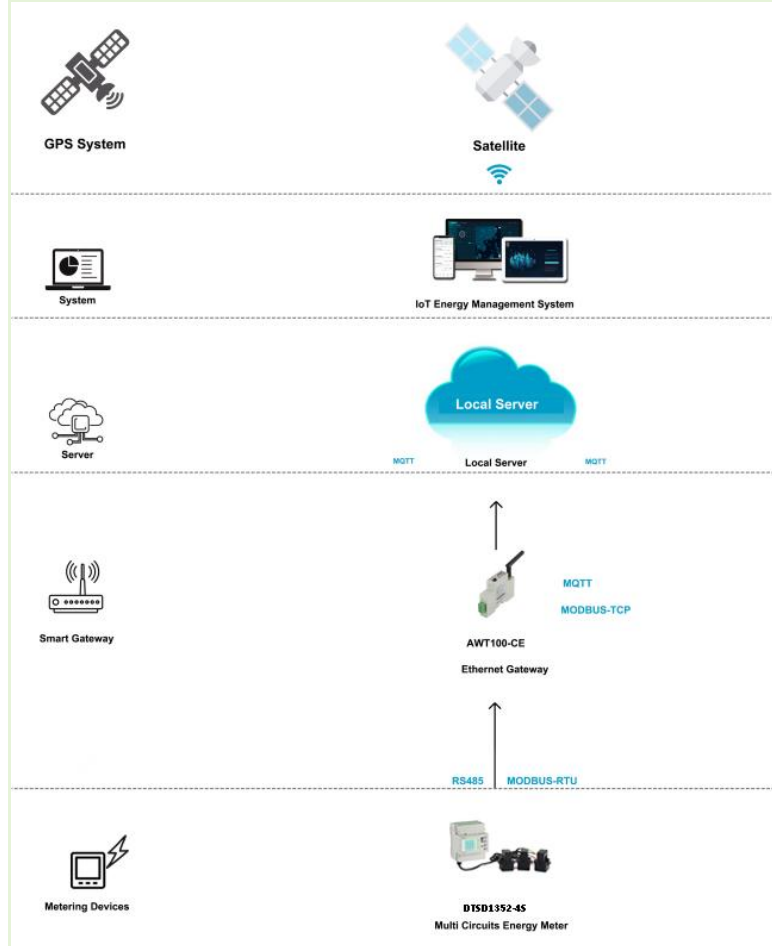
Project Amount: About \$186,000

Client & End user: Deluxe House

Client Website: <https://www.bydeluxe.com/>

Related projects: EMS for other buildings

IoT EMS System Diagram



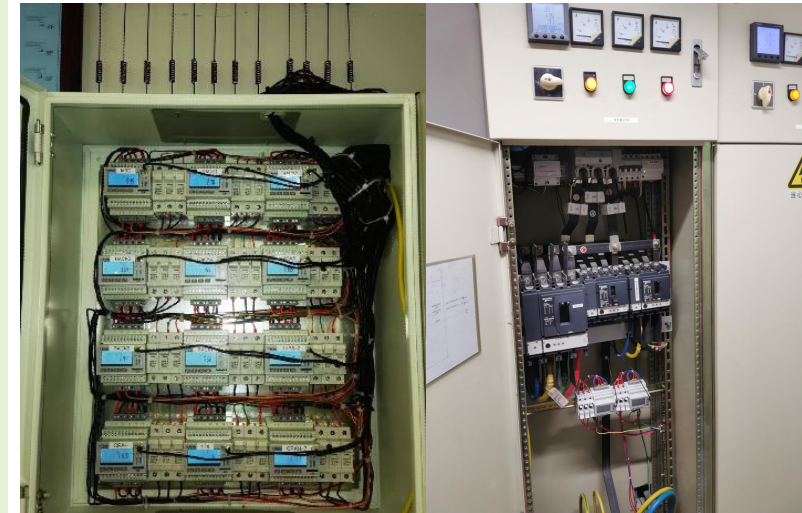
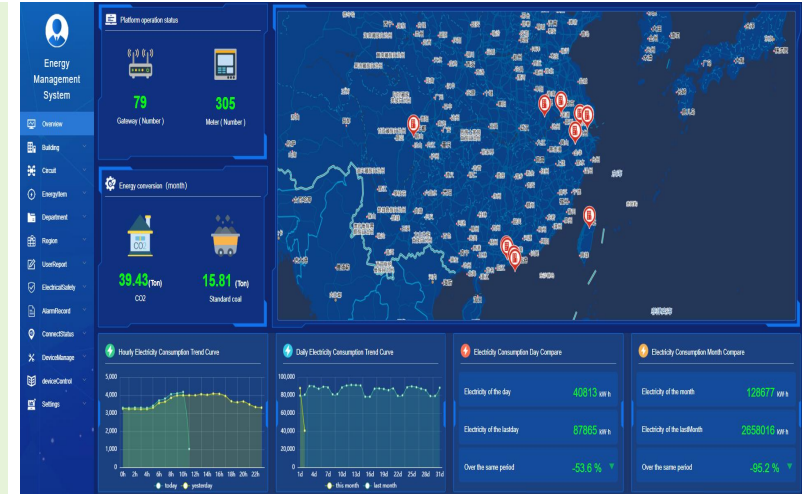
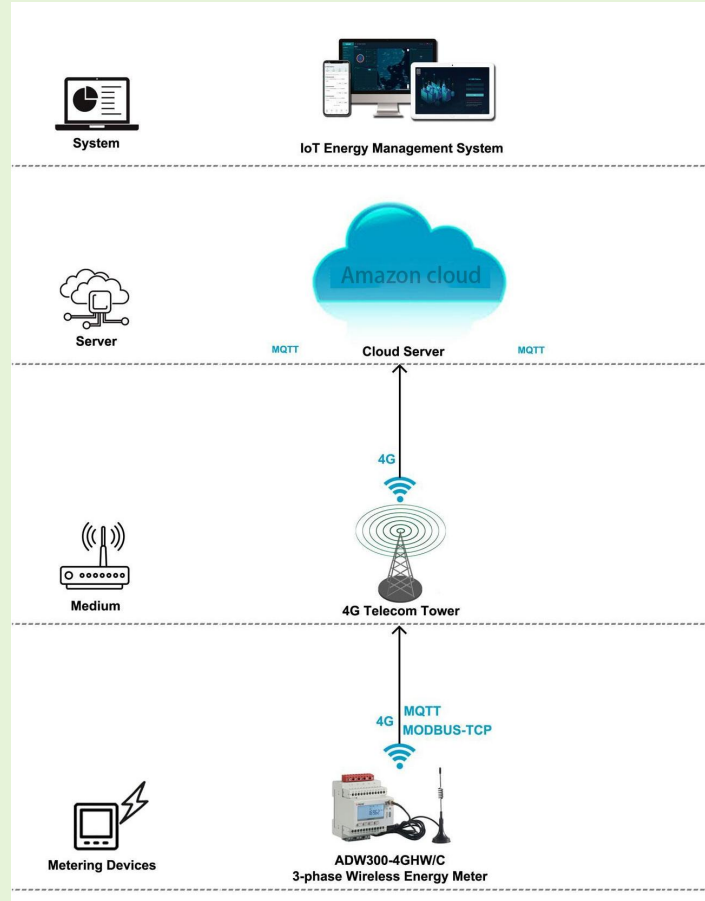
SP2-CH3 DB/WH/M/P WH Mezz MFRs Power	Normal
Gateway ID: 12304130660005 Meter Address: 12304130660002_3 Meter Type: DTSD1352-4	Details
MAIN INCOME 2 - SP3 Audio WH	Normal
Gateway ID: 12304130660008 Meter Address: 12304130660004_2 Meter Type: DTSD1352-4	Details



Energy Management System of CISCO USA



IoT EMS System Diagram



Project Overview:

Software : Acrel IoT EMS System

Hardware: ADW300-4G wireless energy meter

AKH-0.66/K split core current transformer

Project Amount: About \$200,000

Client : SHANGHAI BINRUI INDUSTRY CO.,LTD

End user: CISCO SYSTEMS INC

Client Website: <http://binrui-sh.com/>

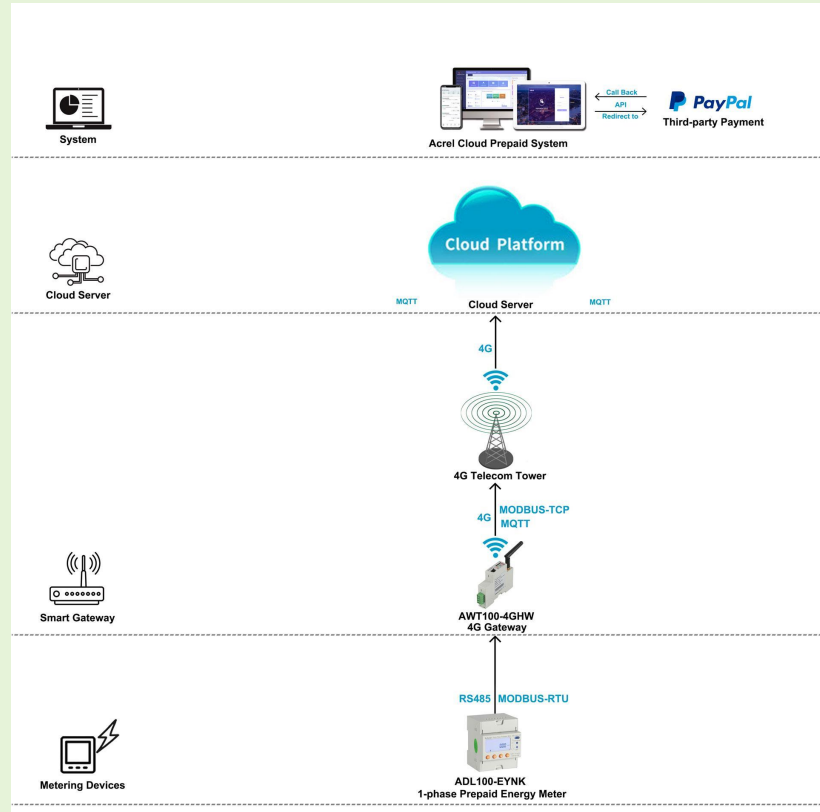
Related projects: CISCO EMS System in Asia areas



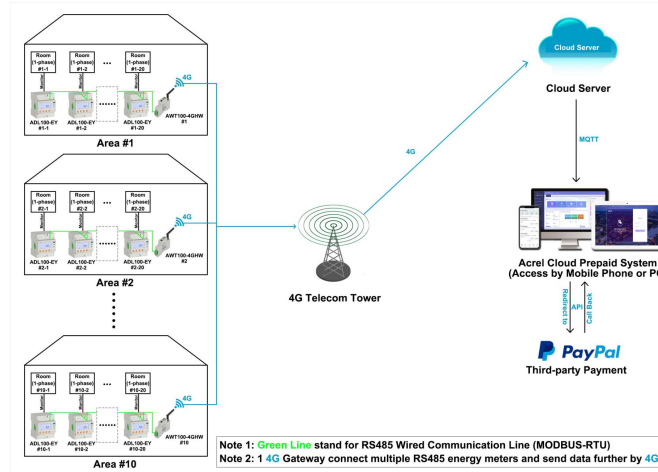
www.acrel-electric.ke aaron@acrel.cn



South Africa Apartment & Industrial Zone Prepaid & Postpaid Project



IoT EMS System Diagram



Note 1: Green Line stand for RS485 Wired Communication Line (MODBUS-RTU)
 Note 2: 1 4G Gateway connect multiple RS485 energy meters and send data further by 4G



Project Overview: With local contractor customer for providing the complete online prepaid&pospaid solution for local apartment and industrial zone [related product: ADL100-EYNK, AWT100-4GHW, ADW300-4GHW, etc]

Project Amount: About \$140,000

Client : AIT Group [Contractor]



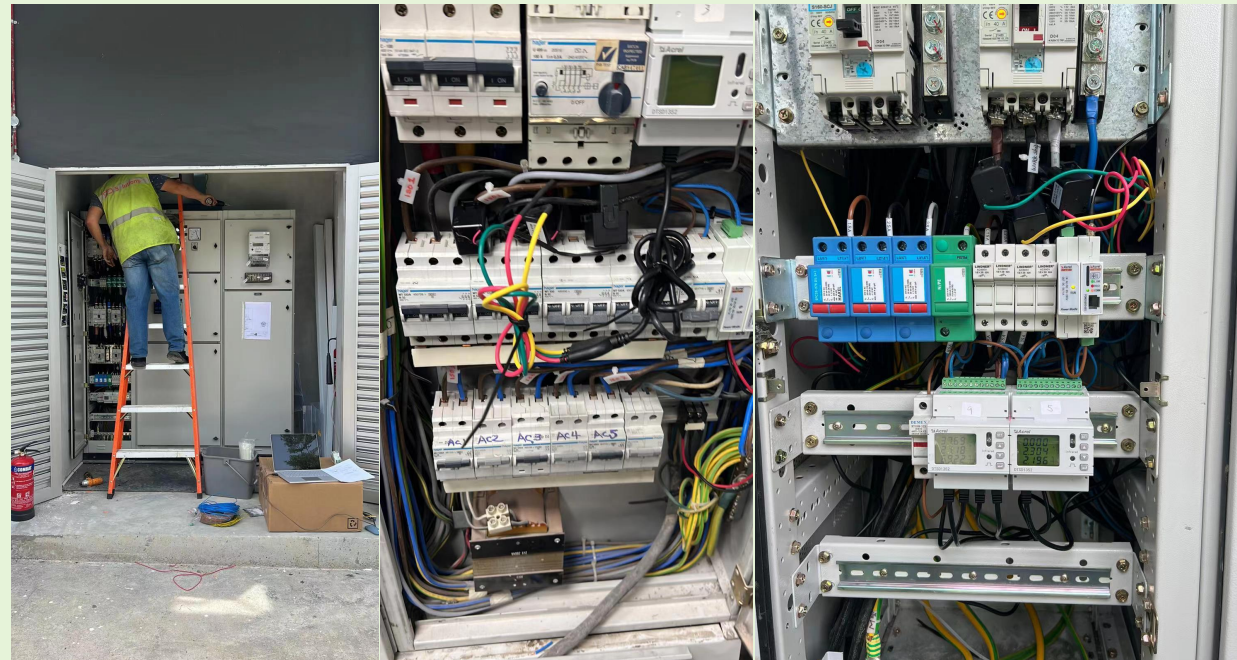


PETROLEUM





Gas Station Energy Monitoring Project of Singapore



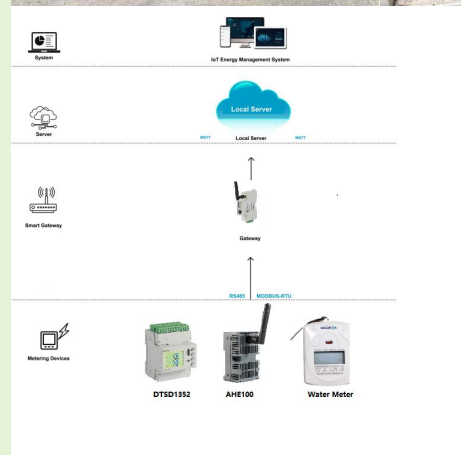
Project Overview: Clients want to manage the water and electricity in the gas station, and monitor the temperature at the same time. They can view the data remotely through the platform, and the alarm of dangerous situations such as overcurrent and overvoltage will also notify the administrator in time. For this application, we provide multi channels energy meter, water meter, temperature sensor to connect to Acrel IoT EMS platform.

Project Amount: About \$250,000

Client : SD SOLUTIONS PTE. LTD

Website: <https://sdsolutions.com.sg/>

Related projects: Smart Lighting System for building Project in Dubai





MARINE SHORE



www.acrel-electric.ke aaron@acrel.cn





Project Overview: Client buy Acrel IoT EMS cloud system, hardware use ADW310-4GHW, ADW300-4GHW wireless energy meter, AKH-0.66/K split core current transformer.

Project Amount: About \$100,000

Client : Nakers Marine and Industrial Services , EPC DARWIN PORT OPERATIONS PTY LTD, End user

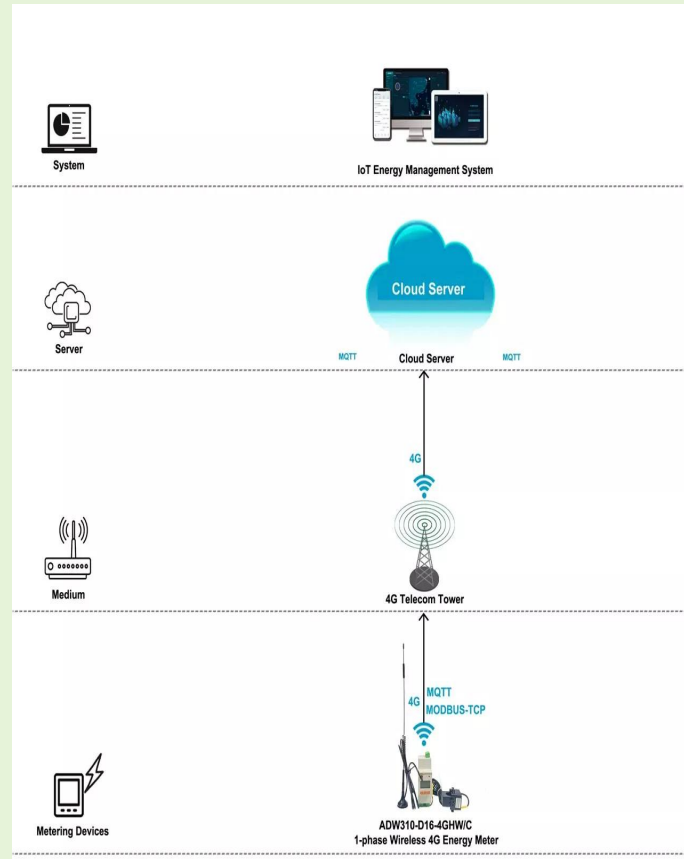
Client Website: <https://dcs-tr.com/>

Related projects: Other electric power monitoring to other MSC ship

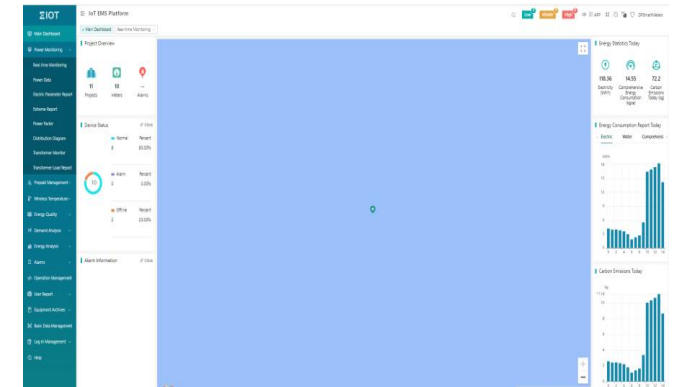
Client Website: <https://darwinport.com.au/>

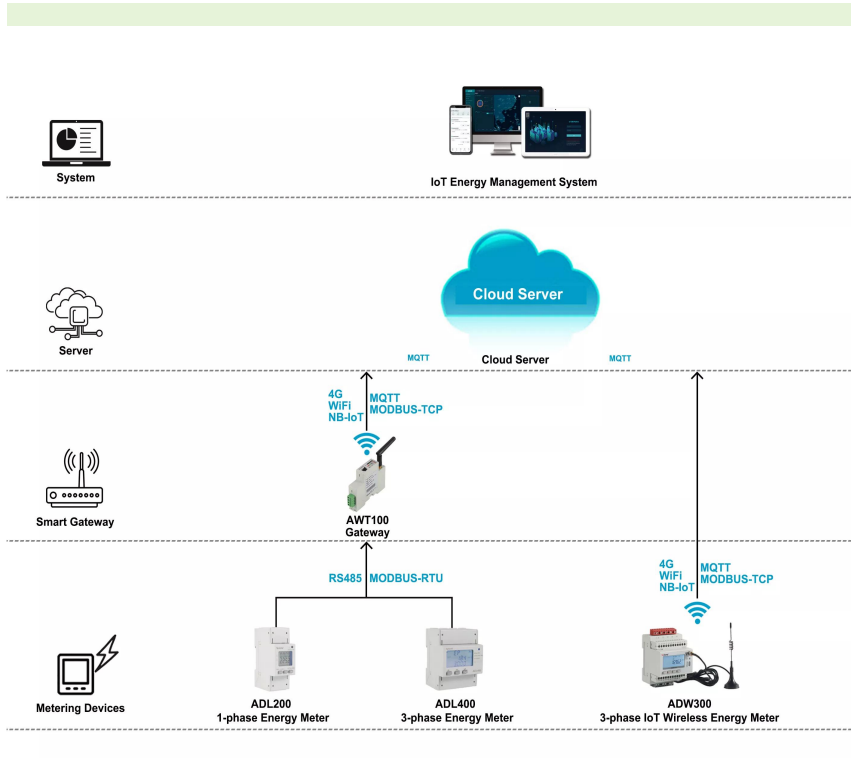
Related projects: Other electric power monitoring of other ports

IoT EMS System Diagram



IoT Platform Site Photo





IoT EMS System Diagram



Project Overview: Client buy Acrel IoT EMS cloud system, hardware use ADW300 energy meter, AKH-0.66/K split core current transformer,AWT100-CE ethernet gateway.

Project Amount: About \$24,000

Client :R3 CYBER SECURITY INC
Paradise Village Marina, End user



Client Website: paradisevillagemarina.com
Related projects:similar application



SHIPPING



www.acrel-electric.ke aaron@acrel.cn





Project Overview: Client buy Acrel IoT EMS cloud system, hardware use ADF400L multi circuit energy meter, AKH-0.66/K split core current transformer, AWT100-CE ethernet gateway.

Project Amount: About \$110,000

Client : DCS shipping company , EPC Mediterranean Shipping Company S.A, End user

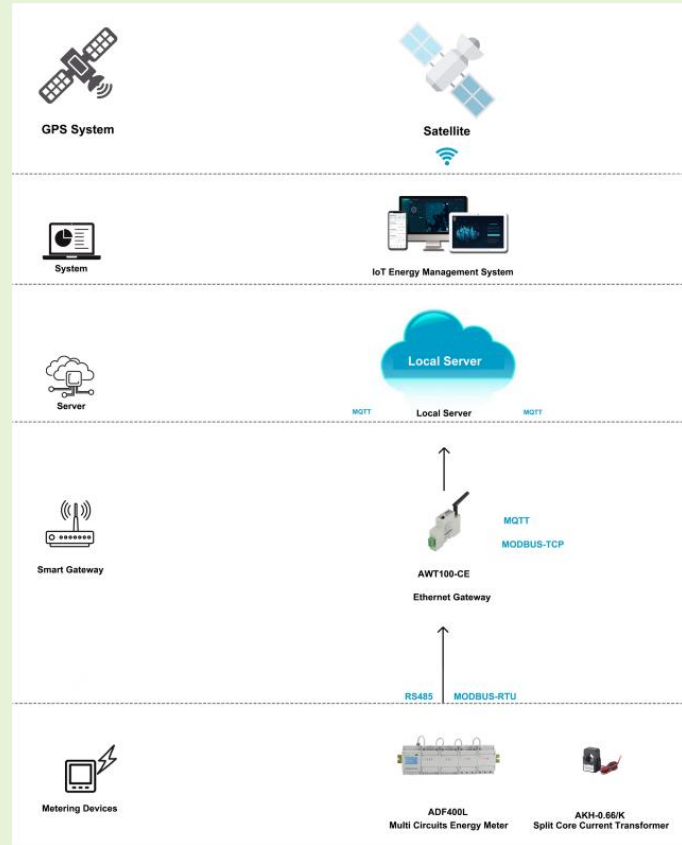
Client Website: <https://dcs-tr.com/>

Related projects: Other electric power monitoring to other MSC ship

Client Website: <https://dcs-tr.com/>

Related projects: Other electric power monitoring to other MSC ship

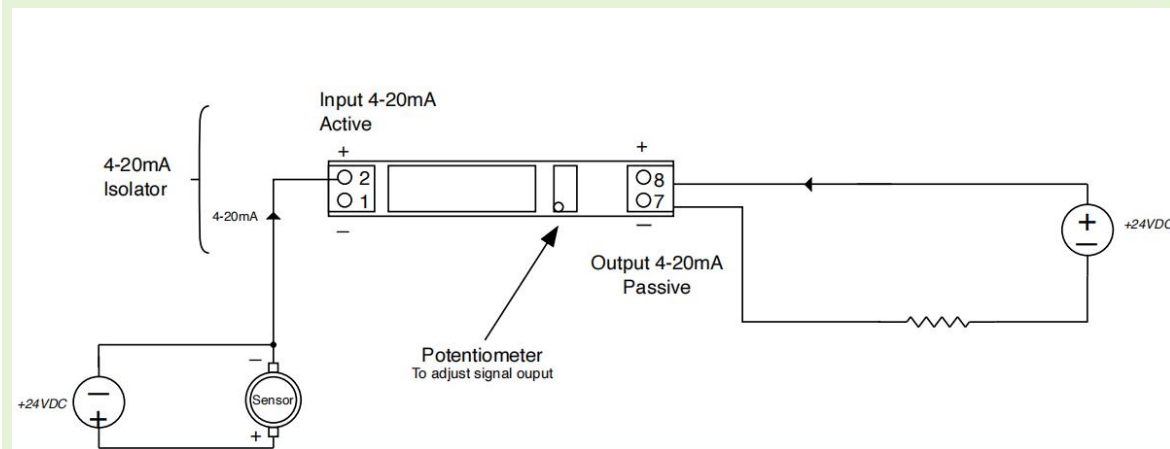
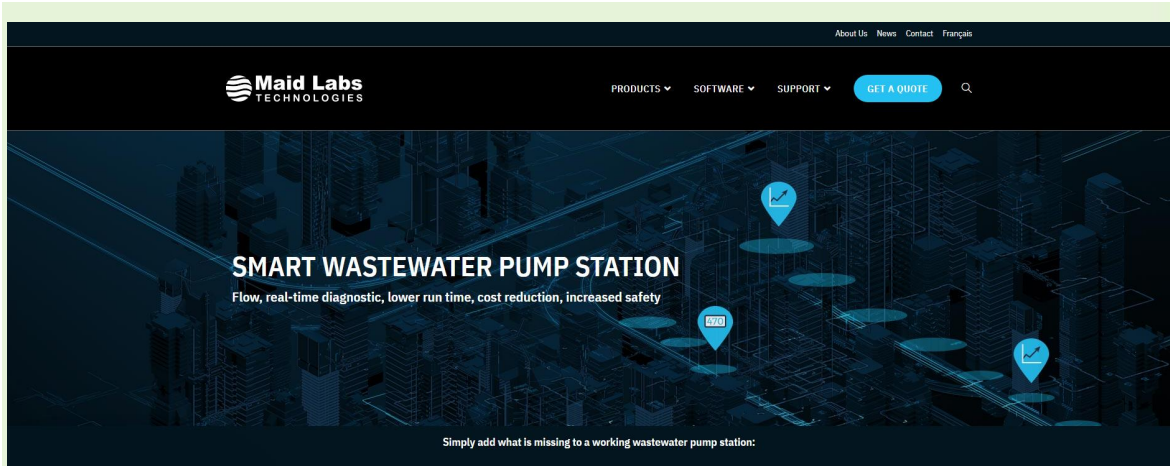
IoT EMS System Diagram





WATER TREATMENT





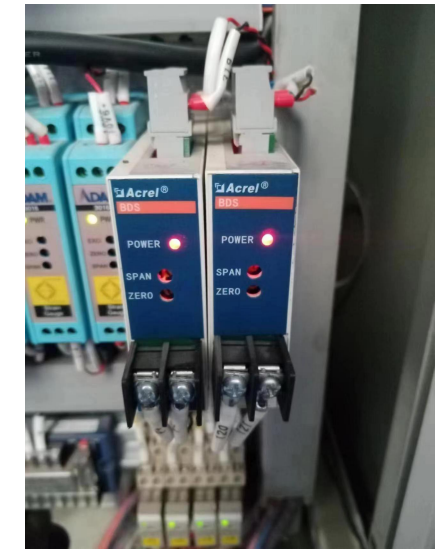
Signal isolator wiring scheme

Project Overview:

The customer needs the signal isolator to be used with their own brand of flow meter

Project Amount: About \$100,000

Client : POWERBUILD CONST AND DEVT CORP





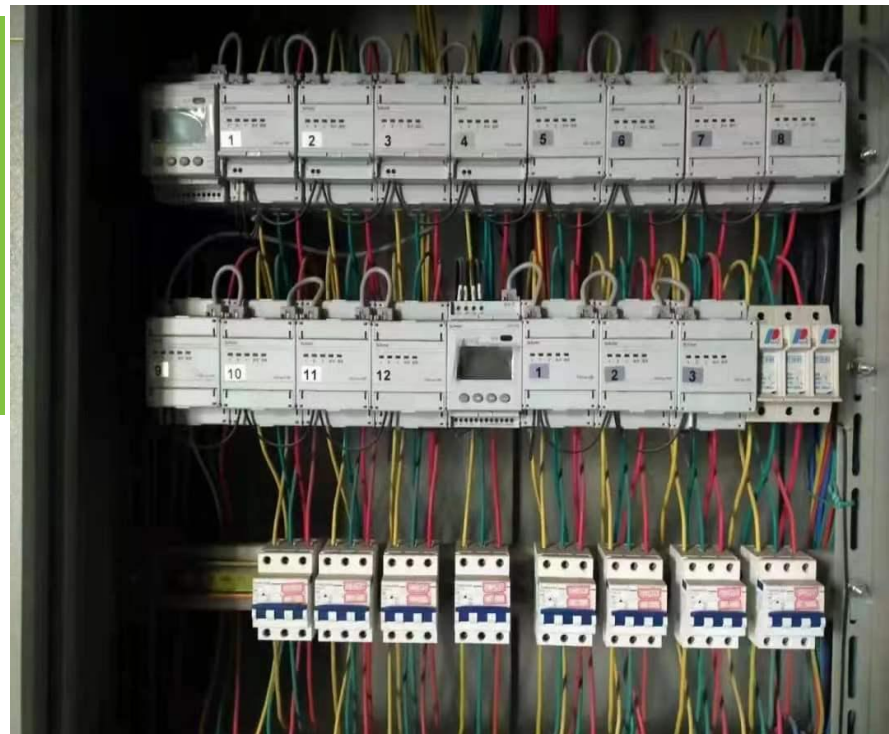
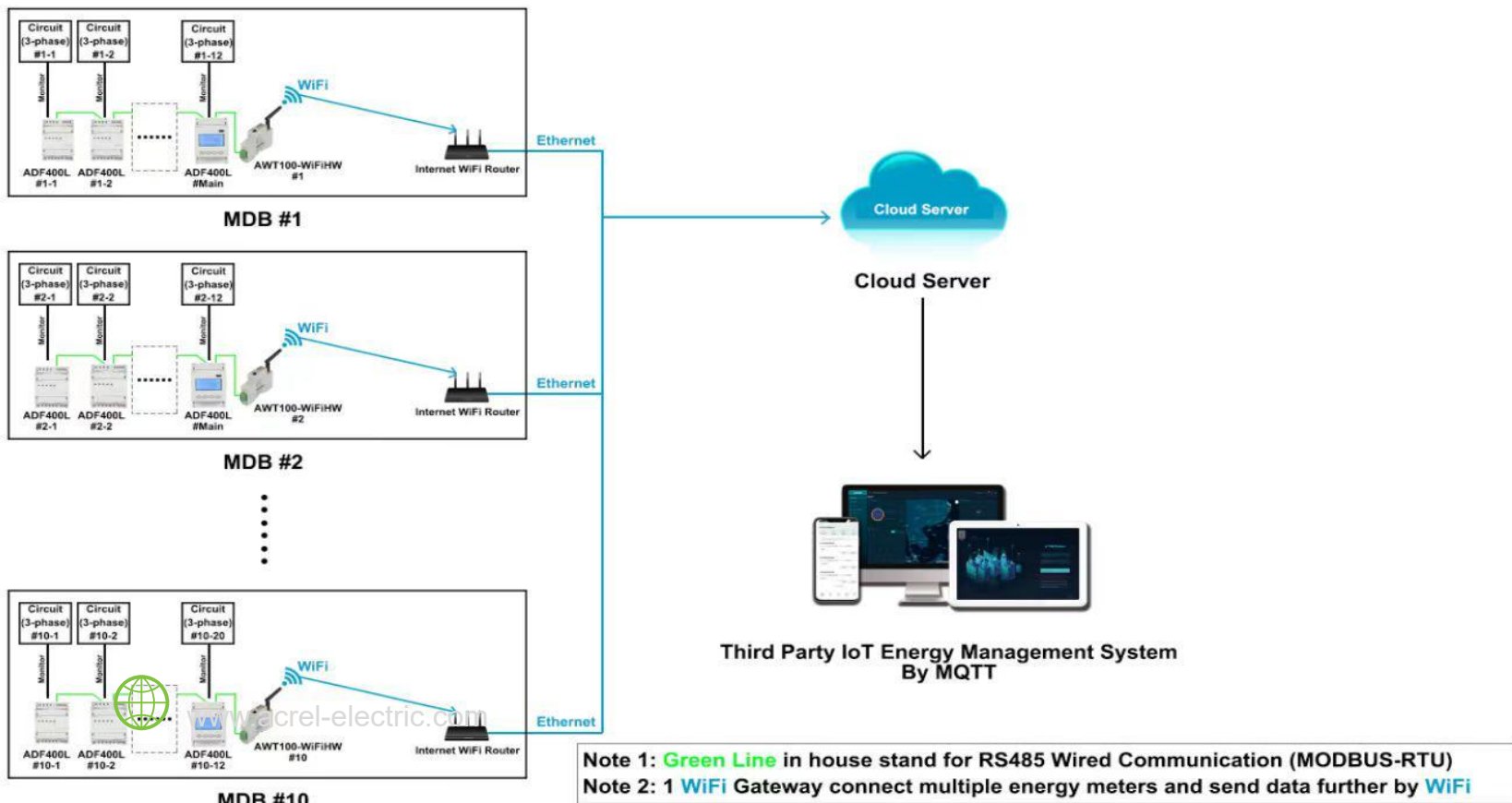
BANK



Project Name:
Arab Bank Jordan Branch

Project Overview:
Client buy Acrel IoT wireless energy meter to upload the values to their own Cloud Platform, hardware use ADF400L, AWT100

Project Amount: About \$120,000



Client : Algebra Intelligence,

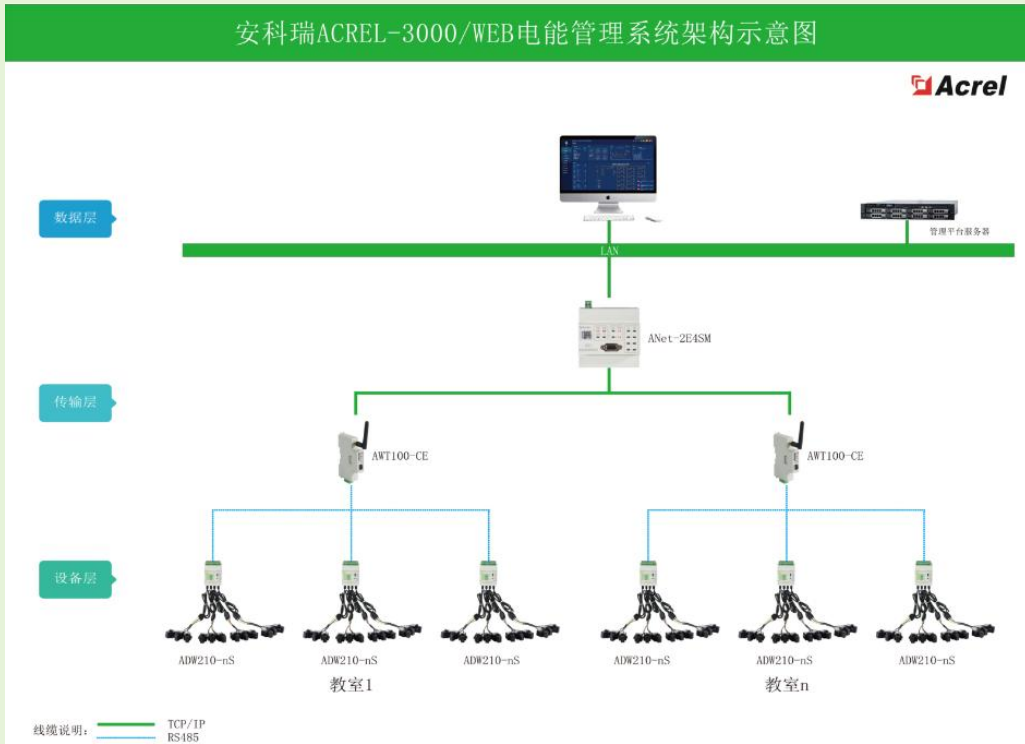
System Integrate Company Client Website:
<https://algebraintelligence.com/>

Related projects: energy consumption monitoring



CAMPUS





Project Overview: In order to promote the construction of green campuses, the Electrical and Mechanical Services Department of the Hong Kong Special Administrative Region Government launched a tender to carry out energy-saving renovations for public schools in Hong Kong.

Product: AWT100-CE、ANet-2E4SM、ADW210-D16

Project Amount: About 4.5 million RMB

Client : Jetson Technology Limited

Client Website: <http://jetson.hk/>

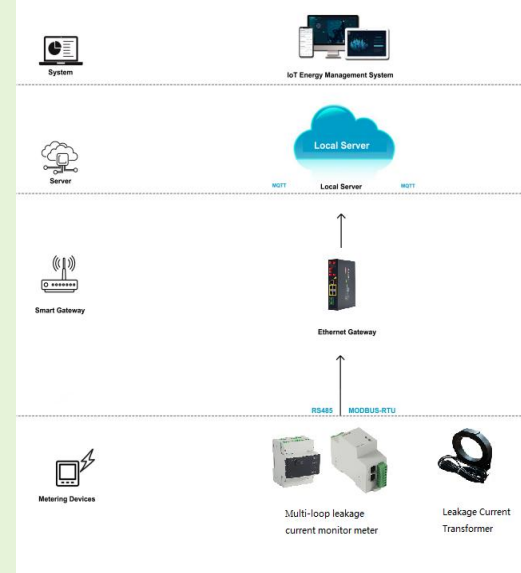
Related projects: power consumption system for shopping mall in Malaysia





STREET LIGHTING





Project Overview: Client buy Acrel ADW200-MTL multi-loop leakage current monitoring meter, with AKH-0.66/L leakage current transformer, to connect with client' own gateway and software monitoring system.

Project Amount: About \$154,000
Client : Datek Light Control AS

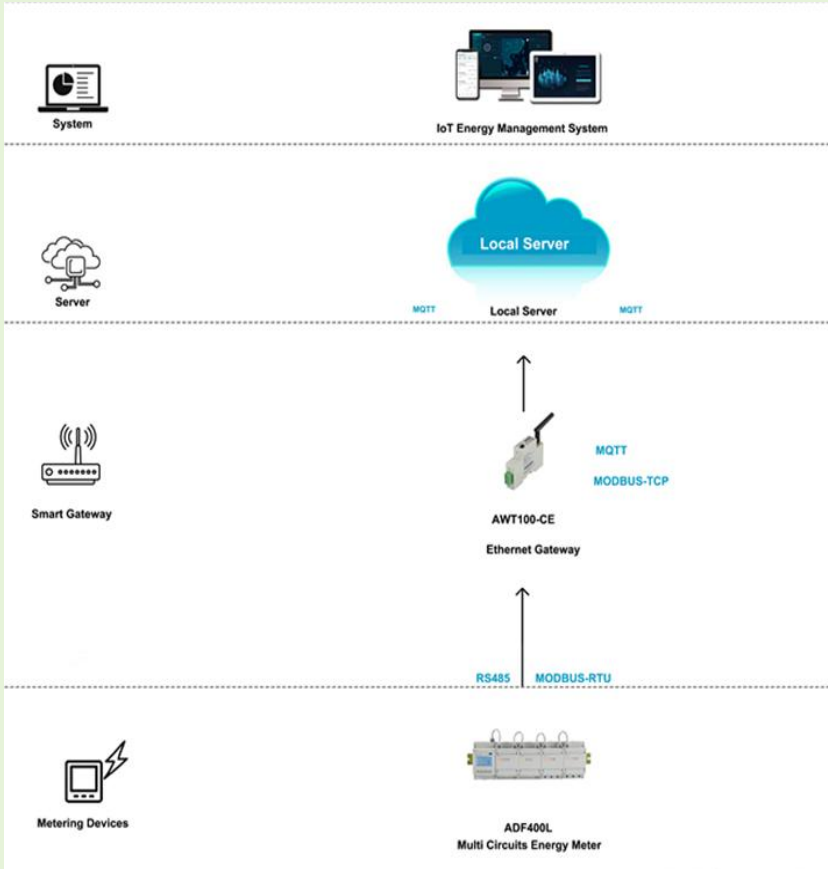
Client Website: <https://www.datek.no/en/city/light-control>
Related projects: Earth Leakage Relay in Intelligent Building



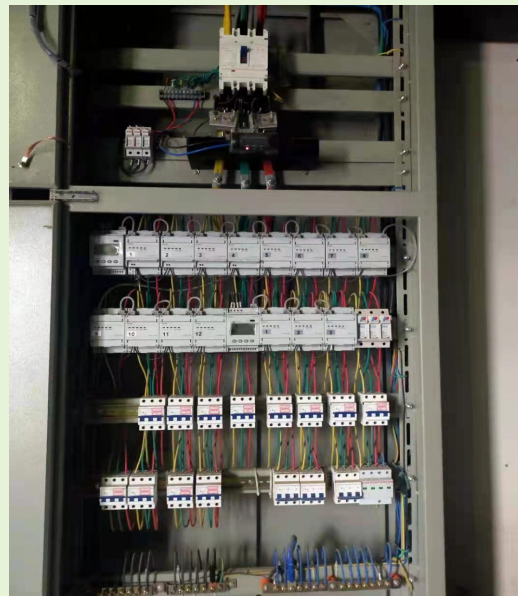
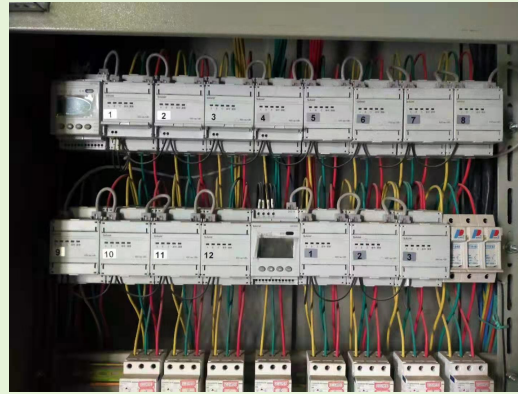
SPORTS BUILDING



Energy Management Project Of Kallang Tennis Center, Singapore



IoT EMS System Diagram



Project Overview: Client buy Acrel IoT EMS cloud system, hardware use ADF400L multi circuit energy meter, AWT100-CE ethernet gateway.

Project Amount: About \$100,000

Client : E-TECH SMART SOLUTIONS PTE LTD , EPC

Kallang Tennis Center, Singapore, End user

Client Website: <https://www.e-tech.com.sg/>

Related projects: Other electric power monitoring to other Kallang Tennis Center, Singapore



ACREL EXHIBITION GLOBAL 2023



www.acrel-electric.ke aaron@acrel.cn



2023 Exhibition

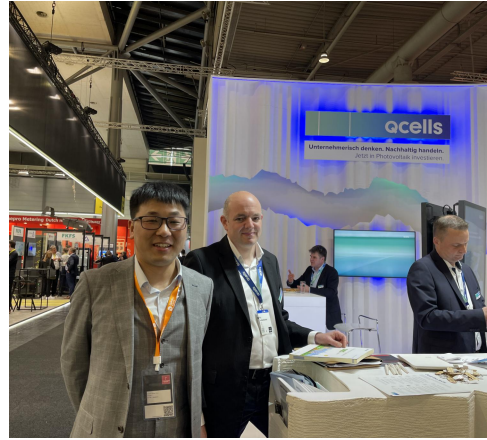
01 Jun.6-9th
Russia.
ELEKTRO,
Booth 21C40

02 Jul.19-21th
Vietnam.
ETE,
Booth 42

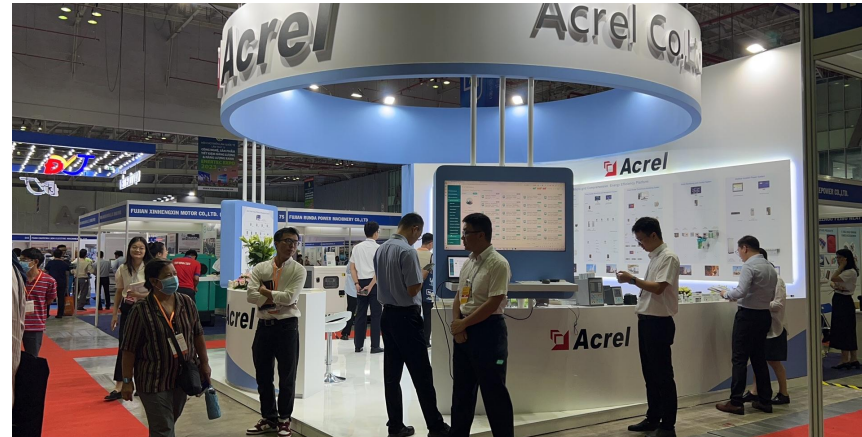
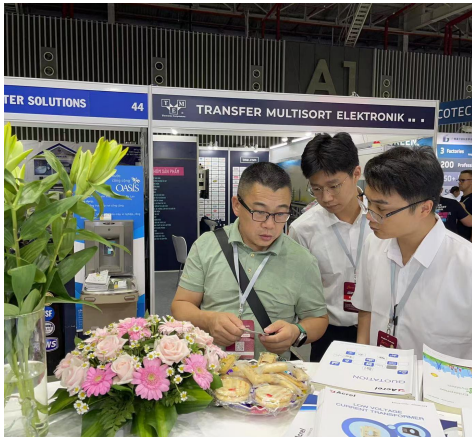
03 Sep.13-16th
Indonesia.
Power Generation,
Renewable Energy & Electric equipment Exhibition.
Booth H3 1516

04 Oct.4-6th
Malaysia.
IGEM,
Booth 4092

05 Nov.28-30th
France.
Paris Expo Fontaine de Versailles,
Booth 7.2M30



Vietnam ETE & ENERTC EXPO 2023





Websites



Ads Window



AliExpress

